

## 2 YEAR WARRANTY

Retain this section of the warranty card with your receipt/proof of purchase. You must present it to obtain replacement or service under the warranty.

**The warranty may only be claimed where proof of original purchase is presented, i.e. original purchase receipt or invoice. Attach a copy of your purchase receipt and store in a safe place.**

To make a warranty claim call Customer Service on the phone number below or email [aus\\_info@conair.com](mailto:aus_info@conair.com) or you can return the defective product back to the place it was purchased where it will be replaced (see Point 12 in Conditions).

### Please provide the following details:

1. Date of purchase
2. Retailer Name & Location:
3. Product Name/Model Number:
4. Confirm you have your purchase receipt:
5. Detail the problem with your product:

#### Conair Australia Pty Ltd

PO Box 146  
Terrey Hills  
NSW 2084

#### Customer Service

Australia  
1800 650 263  
email : [aus\\_info@conair.com](mailto:aus_info@conair.com)

#### Conair New Zealand Ltd

PO Box 251159  
Pakuranga, Auckland  
New Zealand 2140

#### Customer Service

New Zealand  
0800 266 247  
email: [aus\\_info@conair.com](mailto:aus_info@conair.com)

## WARRANTY AGAINST DEFECTS

### A. AUSTRALIAN CONSUMER LAW

1. Our goods come with guarantees that cannot be excluded under the Australian Consumer Law. You are entitled to a replacement or refund for a major failure and compensation for any other reasonably foreseeable loss or damage. You are also entitled to have the goods repaired or replaced if the goods fail to be of acceptable quality and the failure does not amount to a major failure. 2. The guarantees under the Australian Consumer Law ("ACL") are provided in sections 51 to 59 inclusive of the ACL ("Statutory Guarantees") and the remedies are provided in sections 259 to 266 inclusive of the ACL ("Statutory Remedies").

### B. VS SASSOON EXTENDED WARRANTY

1. In addition and subject to the Statutory Guarantees and Statutory Remedies, the following express warranty ("Warranty") commences from the date of purchase and continues for a period of 60 months ("Warranty Period") after which it expires. Subject to the conditions in Section C below, Conair warrants to the original purchaser ("Purchaser") of the VS Sassoon product that is the subject of this warranty ("Product") that if during the Warranty Period, the Product suffers from any defect caused by faults in materials or workmanship, Conair will a) replace the Product, or b) exchange defective parts in the Product or c) repair the Product, as Conair may choose in its discretion ("Warranty"). In this Warranty "Conair" means Conair Australia Pty Limited (ABN 64 068 492 044) of The Equinox Centre, Suite 101, 18 Rodborough Rd, Frenchs Forest, NSW, 2086, in relation to Products purchased in Australia and Conair New Zealand Ltd in relation to Products purchased in New Zealand.
2. To honour the Warranty, Conair must replace, or exchange parts in, or repair, the Product, as Conair determines, in accordance with paragraph B1 above, subject always to the conditions in Section C below.

3. If any of the conditions in Section C below are inconsistent with any provisions of the ACL or regulations made thereunder, those provisions of the ACL or regulations shall prevail to the extent of the inconsistency.

### C.CONDITIONS

1. The Product must be used in accordance with manufacturer's instructions. This Warranty does not apply should the defect in or failure of the Product be attributable to misuse, abuse, accident, act of God such as lightning, or nonobservance of manufacturer's instructions on the part of the user. This Warranty does not cover ordinary wear and tear in the Product or its parts.
2. Conair does not accept liability for a) any loss or damage however suffered, caused by or arising out of any failure to use the Product in accordance with the manufacturer's instructions, and b) any indirect, consequential or economic loss or damage however caused.
3. This Warranty is immediately void if – a) any serial number or appliance plate is removed or defaced, b) the Product has been serviced or otherwise repaired by a person not authorized to do so by Conair or where non approved replacement parts are used.
4. The Product is designed for domestic use only. The Product must be connected to the electrical voltage supply as specified in the ratings label located on the Product. This Warranty does not cover defects arising from non-domestic use or incorrect voltage supply.
5. This Warranty may only be claimed against where proof of original purchase is presented, for example, original receipt or invoice.
6. Any parts of the Product that need to be replaced, or if the whole Product needs to be replaced, the replaced Product, become the property of Conair. The Warranty on any replacement Product or parts will expire on the same date that the Warranty Period on the original Product expires.
7. The benefits provided by this Warranty are in addition to all other rights and remedies in respect of the Product which the Purchaser has under the ACL, and applicable laws in New Zealand, which rights and remedies by law may not be excluded. All other warranties and representations express and implied are hereby excluded.
8. The defect must have occurred during the Warranty Period and Purchaser bears the onus of proving that fact, and that the defect was not caused by any of the causes excluded from this Warranty.
9. This Warranty does not cover Products purchased from any person who is not a retailer serviced by Conair's authorised distributors or purchased second hand.
10. The Purchaser is responsible for all postage and freight charges and any other expenses incidental to claiming against this Warranty.
11. The Warranty excludes consumable items (such as blades or brushes) and normal wear and tear.
12. If you're certain your product is defective, and the product is covered by the terms of this warranty, you need to take the product back to the place you purchased it from, where the retailer will replace the product for you on our behalf. In this event, per the terms of this warranty you will need to present this portion of the warranty card and the purchase receipt as proof of purchase so please make sure you keep both this card and your receipt on hand for the duration of the warranty period.

### SPARE PARTS

Replacement parts may be available for your product. Contact us on the phone or email address provided for more details. Please provide your product name/model number details, date of purchase and part you require.

## IMPORTANT SAFETY INSTRUCTIONS

### SAFETY CAUTIONS

- This appliance should only be used as described within this instruction booklet.
- WARNING!** Polythene bags over product or packaging may be dangerous. To avoid danger of suffocation, keep wrapper away from babies and children. These bags are not toys.
- WARNING!** Do not use this appliance near water contained in basins, bathtubs or other vessels.
- Do not use the appliance in the bathroom.
- Do not immerse the appliance in water or other liquids.
- Always inspect the appliance before use for noticeable signs of damage.
- Do not use if damaged, or if the appliance has been dropped.
- In the event of damage, contact the Conair Customer Care Line Australia: 1800 650 263 - New Zealand: 0800 266 247.
- Do not leave the appliance unattended when switched on or plugged in.
- Do not place the appliance on any heat sensitive surface whilst in operation.
- In the event of the appliance left switched on, the appliance will automatically shut off after 60 minutes. If you wish to continue using the appliance after this time, simply slide the switch to off position and then slide to the relevant setting to turn the power on.
- Take care to avoid the hot surface of the appliance coming into direct contact with the skin, in particular the eyes, ears, face and neck
- This appliance should not be used by adults who's reduced physical, sensory or mental capabilities, or whose lack of experience and knowledge, might cause a hazard, unless they have been correctly instructed to understand the safe use and hazards involved and are adequately supervised.
- Careful adult supervision is required when this appliance is used on or near children. Do not use on very young children. This appliance is not a toy.
- This appliance should not be used, cleaned or maintained by children. Keep out of reach of children.
- Always ensure that this appliance is kept out of the reach of children at all times, particularly during use and whilst cooling.
- Allow appliance to cool before storing away.
- After use, do not wrap the lead around the appliance as this may cause damage. Instead, coil loosely by the side of the appliance.
- For additional protection, the installation of a residual current device (RCD) with a rated operating current not exceeding 30mA is advisable in the electrical current circuit supplying the bathroom.
- If the supply cord is damaged, it must be replaced by the manufacturer, its service agent or similarly qualified persons in order to avoid hazard.
- This appliance is not intended for commercial use.



### WARNING

**Never leave your styler on and unattended or use around children.**

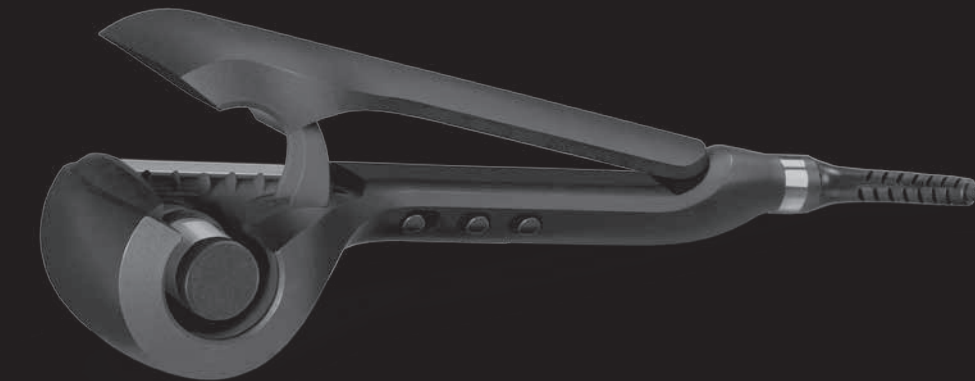
However, should you fail to turn the styler off, it will shut itself off automatically after 60 minutes.

**NOTE:** CURL CHAMBER WILL BE HOT TO THE TOUCH.

# SAVE THESE INSTRUCTIONS AND WARRANTY

**VS**  
SASSOON

# Smooth & Wave



Ensure you read these  
instructions before first use

[www.vssassoon.com.au](http://www.vssassoon.com.au)

VSP2662A

VSP2662A

**CONAIR**

Vidal Sassoon and related logos are trademarks of The Procter & Gamble Company used under license by Conair  
©2017 Conair Australia Pty Ltd  
Suite 101, 18 Rodborough Rd  
Frenchs Forest NSW, 2086  
Australia

CUSTOMER SERVICE:  
Australia: 1800 650 263  
New Zealand: 0800 266 247

CONTACT US:  
For advice, tips on your new VS product  
E-mail us on: [aus\\_info@conair.com](mailto:aus_info@conair.com)

# Smooth & Wave

Congratulations on the purchase of your new VS Sassoon Smooth & Wave. The clever 2 in 1 tool that quickly and effortlessly creates beautiful, soft lasting waves as well as smooth, straight styles all with the flick of a switch. A revolution in automatic styling technology!

## STYLING INSTRUCTIONS

As the Smooth & Wave is a revolutionary new type of styler, it works very differently to the styling tools you may have used in the past. As such it's important to carefully read through the instructions before using for the first time.

## BEFORE USE

- When using the unit for the first time, you might notice a little smoke and distinct odour: this is common and will disappear by next use.
- Each time you use the appliance, you may see some steam. Do not be concerned, this could be because of the evaporation of the natural oils of the hair, residual hair products, or excess moisture evaporating from you hair.

## INSTRUCTIONS FOR USE

### CREATING WAVES

1. The hair should be clean, dry, combed through and free of dry shampoo, hairspray, mousse, spray wax, styling dust and all other styling products. Comb through to remove any tangles and divide the hair into sections, no bigger than 3cm wide.

2. Select the wave setting by sliding the switch to wave mode ↶

3. Wave direction can be selected by sliding the switch to desired direction:

- ⌚ = Clockwise
- ↻ = Alternate
- ⌚ = Anti-Clockwise

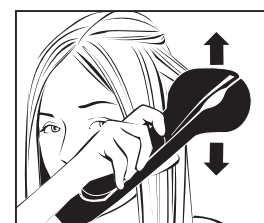
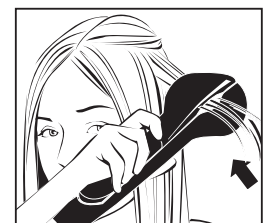
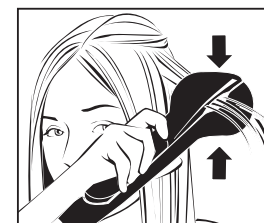
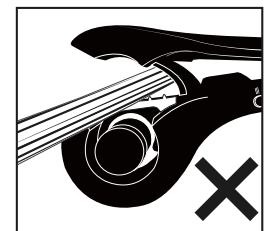
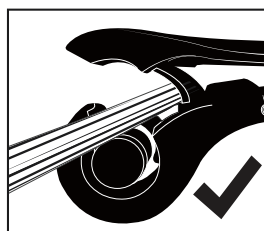
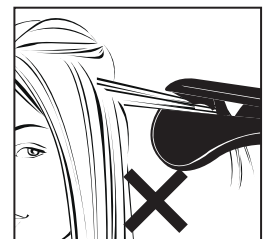
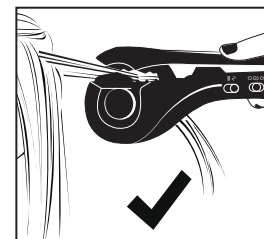
4. Always insert the styler into the hair with the open part of the ceramic chamber facing towards the head.

5. **IMPORTANT!** The neat section of hair must be inserted into the opening, beyond the hair stopper (A), until it reaches guide (B).

6. **IMPORTANT!** Firmly close the handles together to allow the hair to be drawn into the ceramic chamber.

Keep the appliance in position and once the hair has been drawn into the ceramic chamber, the appliance will start beeping. Continue to hold the handles closed until the appliance sounds finish audio, this is to indicate the time is up.

7. Release the handles fully and gently move the styler away from the head to reveal the wave.



### CREATING SMOOTH STYLES

1. The hair should be clean, dry, combed through and free of dry shampoo, hairspray, mousse, spray wax, styling dust and all other styling products. Comb through to remove any tangles and divide the hair into sections, no bigger than 3cm wide.

2. Select the straight setting by sliding the switch to straight mode |||

3. Separate a clean section of hair, no bigger than 3cm wide. When working with naturally curly or longer length hair, use smaller sections.

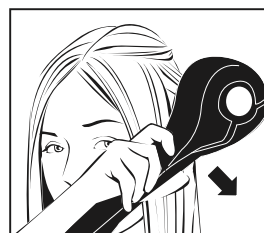
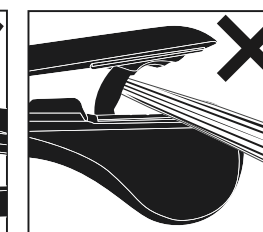
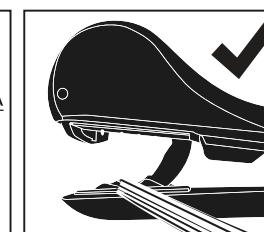
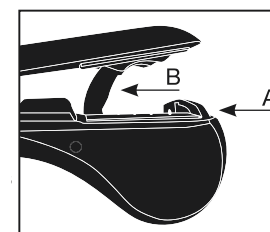
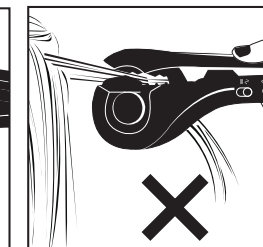
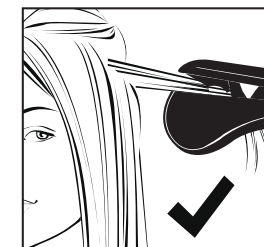
4. Always insert the hair into the appliance with the plate part facing towards the head. Place a section of hair between the straightening plates, close to the roots.

5. **IMPORTANT!** The neat section of hair must be inserted into the opening, beyond the hair stopper (A) until it reaches guide (B).

6. Firmly close the handles together to allow the hair to start to be drawn into the ceramic chamber.

7. As soon as the hair starts to be drawn into the ceramic chamber, holding the hair firmly between the straightening plates, immediately slide the appliance down the length of the hair from root to tip to release the smooth section of hair.

8. **IMPORTANT!** Do not wait for the hair to be completely drawn into the chamber before straightening. Simply clamp and go to straighten.



## HEAT SETTINGS

If you have delicate, fine or coloured hair, use the lower heat settings. For thicker hair, use the higher heat settings.

It is suggested to always complete a test on initial use to ensure the correct temperature is used on the hair type. Start on the lowest setting and increase the temperature until desired result is achieved.

Below is a guide of the temperature settings:

- ⏻ = OFF
- = 180°C
- = 200°C
- = 230°C

### Wave or Straight Settings

The wave or straight setting allows you to switch between the Wave Mode for perfectly formed waves or straight mode for a sleek finish.

Below is a guide of the wave and smooth settings:

- ⌚ = Wave Mode
- ||| = Straight Mode

### Wave Direction Settings

The wave direction settings allow you to choose the direction of your wave formation.

Below is a guide of the wave direction settings:-

- ⌚ = Clockwise
- ↻ = Alternate
- ⌚ = Anti-Clockwise

### Sleep Mode

This appliance has an automatic sleep mode feature. If the appliance is not used for more than 20 minutes the temperature will automatically drop to 150°C. If you wish to continue using the appliance after this time, simply close then release the handles and it will return to the temperature setting you were using it on.

### Auto Shut Off

This appliance has an automatic shut off feature for added safety. If the appliance is switched on for more than 60 minutes continuously, it will automatically switch off. If you wish to continue using the appliance after this time, simply slide the switch to the "⏻" setting, then slide the switch to the relevant setting to turn the power on again.

## Heat Mat

The appliance comes with a heat mat for use during and after styling.

During use do not place the appliance on any heat sensitive surface, even when using the heat mat provided. After use, switch off and unplug the appliance. Immediately wrap the appliance in the heat mat provided and allow to fully cool down. Continue to keep it out of reach of children as it will remain hot for several minutes.

## FEATURES:

1. Ceramic Curl Chamber
2. Floating Ceramic Straightening Plate
3. 3 Temperature Settings (180°C, 200°C, 230°C)
4. Rotation Selector (LEFT, RIGHT OR ALTERNATE)
5. Straight or Wave Setting Selector
6. 2.5m Swivel Cord

