



ABOUT YOUR STRAIGHT & CURL STYLER

Introducing the Straight & Curl Brilliance - a dual function 2-in-1 styler to straighten or curl. Achieve lasting sleek, poker straight hair or flawless waves & curls with ease & perfection, while the frizz controlling ions smooth hair & add shine for flawless results on all hair types.

Go to vssassoon.com.au for hair inspiration and handy videos on how to get the most out of your new Straight & Curl Brilliance.



1. Sol-Gel Ceramic Plates
2. Ionic Conditioning System
3. On/Off Button
4. Lock Switch
5. Temperature adjustment buttons + and -
6. 5 heat settings (150°C to 235°C)
7. Contoured, ultra-smooth stainless steel outer housing
8. Premium storage bag with fold out mat
9. Cool tips for curling - easily removable
10. Universal heat protection glove

ULTRA-FAST STYLING	With advanced dual ceramic heating up to 235°C giving superior fast-action heat transfer & constant even heat on every section for lasting results.
ANTI-FRIZZ TECHNOLOGY	Ionic Conditioning System delivers frizz controlling active ions to eliminate static & reduce frizz. Active ions surround the hair to smooth hair & give an ultimate shine boost with every pass.
CONTROLLED STYLING	5 heat settings allows for personalised temperature requirements to suit your hair type for enhanced hair protection & healthy-looking hair.
LASTING CURLS	Contoured, ultra-smooth stainless steel outer housing creates flawless waves & curls with lasting hold. Solid housing design allows for perfect plate alignment at all times.
EFFORTLESS SMOOTHNESS	Advanced Sol-Gel straightening plates combined with 15x* more luxurious ceramic gives ultimate glide & longer lasting results with ultimate durability.

FIRST USE

- Remove all packaging & point of sale labels before use.
- Remove plastic cover from plug before use. (used to protect it from damage during transportation)

OPERATING INSTRUCTIONS

- Towel dry & detangle the hair.
- Dry hair as normal.
- Always ensure your hair is completely dry before using the styler. Never use the styler on wet hair.
- Plug the styler into a suitable mains socket. Press the button & the styler will turn on immediately. Select the temperature setting that is best for your hair type by pressing the '+' & '-' buttons. When the indicator light stops blinking, the temperature has been reached.
- There are 5 temperature settings, as a guide:
 - Use the lower temperature settings (150°C & 170°C) on fine, damaged or coloured hair.
 - Use the medium temperature settings (190°C) on normal hair.
 - Use the higher temperature settings (210°C & 235°C) on thicker, coarser hair.

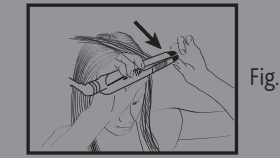
STRAIGHTENING

- Take a section of hair & place it between the styling plates.
- Close the plates at the roots applying gentle pressure gliding in one downwards smooth movement.
- Repeat as necessary through the remaining sections of hair.
- Allow the hair to fully cool down before combing through.

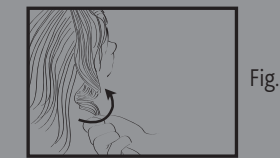
CREATING CURLS

- Ensure cool tips are in position at the end of the styler.
- To curl, separate a section of hair. The smaller the section, the more defined the curl; the larger the section, the looser the curl.
- Place the hair section between the plates, roughly 7 centimeters from the roots (see Fig. 1).

- Hold the styler handle in one hand & the cool tips in the other. Wrap the hair around the outside by rotating the styler 180 degrees outwards (see Fig. 2).



Slowly glide the styler along the length of hair from root to tip in a downward motion (see Fig. 3), then release the styler from the hair. Hold the end of the section you have curled & twist in the direction of the curl (see Fig. 4).



- After use, press the button & the styler will turn off immediately, then unplug from the power point.
- Place the styler on the storage bag fold out mat provided & allow to fully cool down before storing away.

WARNING: This is a high heat appliance. Care must be taken to avoid the hot surfaces of the appliance coming into direct contact with the skin, in particular the eyes, ears, face & neck.

IMPORTANT: This is a high heat appliance at 235°C. If your hair has been heavily bleached or is chemically treated or you are concerned with the condition of your hair, please consult your hairdresser before using this appliance.

CAUTION! A universal heat protective glove has been supplied to help protect the hand from temporary contact with the barrel when wrapping the hair around the styler. Please note the heat glove is only designed to give initial contact protection. Discomfort will be caused with prolonged contact with the hot surface.

For more tips and techniques on how to curl using the Straight & Curl Brilliance, go to vssassoon.com.au

STYLE TIPS

CURLS

// Take a section & wind hair around the barrel. Wind up as far as you want your curl. Try to use the full length of the barrel to spread the section. Hold for five to eight seconds, or until you can feel that your hair is heated through. Leave curl to cool & set before combing or styling further.

MODERN

// Wind the hair up the barrel to the hair root or as far up the section as you want curls. For a more modern curl, don't wind the hair right the way up to the top of the hair section; instead, leave at least 7cm from the root to the start of the curl.

TOUSLED

// For a more tousled look, finger comb the curls to break them up once the hair has cooled.

EXPERT TIPS

// The type of curl achieved depends not just on the size the barrel but also on the section of hair that you wind around the barrel of the curling tong. For looser, free-flowing curls, use bigger sections. Create a more defined, tighter curl by using sections. Pin the curl in the rolled shape & leave to cool for longer lasting results. Finish with a bit of hairspray for extra protection & hold prior to curling.

STRAIGHTEN

// For the best results, start with clean, dry & thoroughly combed through hair. Straighten your hair in sections making sure you go over each section once only to get a gorgeous, silky finish. Apply a heat spray for extra protection & longer lasting results.

VOLUME

// Straight hair doesn't have to be poker straight. Create volume by making a curved movement with your wrist as you glide the straighteners down the hair length.

SHORTER STYLES

// Straight hair isn't just for long styles. Create a classic glossy bob by using this straightener on your shorter cut.

5 YEAR WARRANTY

Retain this section of the warranty card with your receipt/proof of purchase. You must present it to obtain replacement or service under the warranty.

Register your product warranty vssassoon.com.au/warranty or vssassoon.co.nz/warranty for warranty support and to stay up to date with the latest news from VS Sassoon

The warranty may only be claimed where proof of original purchase is presented, i.e. original purchase receipt or invoice. Attach a copy of your purchase receipt and store in a safe place.

To make a warranty claim call Customer Service on the phone number below or email aus_info@conair.com or you can return the defective product back to the place it was purchased where it will be replaced (see Point 12 in Conditions).

Please provide the following details:

1. Date of purchase
2. Retailer Name & Location:
3. Product Name/Model Number:
4. Confirm you have your purchase receipt:
5. Detail the problem with your product:

Conair Australia Pty Ltd PO Box 146 Terry Hills NSW 2084	Conair New Zealand Ltd PO Box 251159 Pakuranga, Auckland New Zealand 2140
--	---



Certain trademarks used under license from The Procter & Gamble Company or its affiliates.

©2019 Conair Australia Pty Ltd
Suite 101, 18 Rodborough Rd
Frenchs Forest NSW, 2086
Australia

CUSTOMER SERVICE:
Australia: 1800 650 263
New Zealand: 0800 266 247

CONTACT US:
For advice, tips on your new VS product
E-mail us on: aus_info@conair.com

vssassoon.com.au

VSS481A
*than vs standard ceramic coating

Customer Service
Australia
1800 650 263
email : aus_info@conair.com

WARRANTY AGAINST DEFECTS

A. AUSTRALIAN CONSUMER LAW

1. Our goods come with guarantees that cannot be excluded under the Australian Consumer Law. You are entitled to a replacement or refund for a major failure and compensation for any other reasonably foreseeable loss or damage. You are also entitled to have the goods repaired or replaced if the goods fail to be of acceptable quality and the failure does not amount to a major failure. 2. The guarantees under the Australian Consumer Law ("ACL") are provided in sections 51 to 59 inclusive of the ACL ("Statutory Guarantees") and the remedies are provided in sections 259 to 266 inclusive of the ACL ("Statutory Remedies").

B. VS SASSOON EXTENDED WARRANTY

1. In addition and subject to the Statutory Guarantees and Statutory Remedies, the following express warranty ("Warranty") commences from the date of purchase and continues for a period of 60 months ("Warranty Period") after which it expires. Subject to the conditions in Section C below, Conair warrants to the original purchaser ("Purchaser") of the VS Sassoon product that is the subject of this warranty ("Product") that if during the Warranty Period, the Product suffers from any defect caused by faults in materials or workmanship, Conair will a) replace the Product, or b) exchange defective parts in the Product or c) repair the Product, as Conair may choose in its discretion ("Warranty"). In this Warranty "Conair" means Conair Australia Pty Limited (ABN 64 068 492 044) of The Equinox Centre, Suite 101, 18 Rodborough Rd, Frenchs Forest, NSW, 2086. in relation to Products purchased in Australia and Conair New Zealand Ltd in relation to Products purchased in New Zealand.

2. To honour the Warranty, Conair must replace, or exchange parts in, or repair, the Product, as Conair determines, in accordance with paragraph B1 above, subject always to the conditions in Section C below.

3. If any of the conditions in Section C below are inconsistent with any provisions of the ACL or regulations made thereunder, those provisions of the ACL or regulations shall prevail to the extent of the inconsistency.

C. CONDITIONS

1. The Product must be used in accordance with manufacturer's instructions. This Warranty does not apply should the defect in or failure of the Product be attributable to misuse, abuse, accident, act of God such as lightning, or nonobservance of manufacturer's instructions on the part of the user. This Warranty does not cover ordinary wear and tear in the Product or its parts.

2. Conair does not accept liability for a) any loss or damage however suffered, caused by

Customer Service
New Zealand
0800 266 247
email: aus_info@conair.com

or arising out of any failure to use the Product in accordance with the manufacturer's instructions, and b) any indirect, consequential or economic loss or damage however caused.

3. This Warranty is immediately void if – a) any serial number or appliance plate is removed or defaced, b) the Product has been serviced or otherwise repaired by a person not authorized to do so by Conair or where non approved replacement parts are used.

4. The Product is designed for domestic use only. The Product must be connected to the electrical voltage supply as specified in the ratings label located on the Product. This Warranty does not cover defects arising from non-domestic use or incorrect voltage supply.

5. This Warranty may only be claimed against where proof of original purchase is presented, for example, original receipt or invoice.

6. Any parts of the Product that need to be replaced, or if the whole Product needs to be replaced, the replaced Product, become the property of Conair. The Warranty on any replacement Product or parts will expire on the same date that the Warranty Period on the original Product expires.

7. The benefits provided by this Warranty are in addition to all other rights and remedies in respect of the Product which the Purchaser has under the ACL, and applicable laws in New Zealand, which rights and remedies by law may not be excluded. All other warranties and representations express and implied are hereby excluded.

8. The defect must have occurred during the Warranty Period and Purchaser bears the onus of proving that fact, and that the defect was not caused by any of the causes excluded from this Warranty.

9. This Warranty does not cover Products purchased from any person who is not a retailer serviced by Conair's authorised distributors or purchased second hand.

10. The Purchaser is responsible for all postage and freight charges and any other expenses incidental to claiming against this Warranty.

11. The Warranty excludes consumable items (such as blades or brushes) and normal wear and tear.

12. If you're certain your product is defective, and the product is covered by the terms of this warranty, you need to take the product back to the place you purchased it from, where the retailer will replace the product for you on our behalf. In this event, per the terms of this warranty you will need to present this portion of the warranty card and the purchase receipt as proof of purchase so please make sure you keep both this card and your receipt on hand for the duration of the warranty period.

SPARE PARTS

Replacement parts may be available for your product. Contact us on the phone or email address provided for more details. Please provide your product name/model number details, date of purchase and part you require.

HOW TO USE THE LOCKING SWITCH

The locking switch is used to hold the plates together when the styler is not in use for easy & convenient storage. After use, turn the styler off & allow to cool. Hold the styler handle together & slide the locking switch across to secure the plates. To unlock, simply slide the locking switch in the other direction.

IONIC CONDITIONING

Featuring an ionic generator which releases super frizz-controlling ions on to the hair to smooth the cuticle & gives sleek, shiny, healthy looking hair.

NOTE: Turning on the styler will automatically activate the ionic technology. Any noise generated from the ionic ports is normal. A slight buzzing sound can be heard when ionic is active, this is normal operation

TEMPERATURE SETTINGS

The 5 heat digital settings provides variable heats for different hair types. These settings allow you to choose the required temperature setting according to your particular need & hair type. The temperature markings have been included on the styler for quick and easy reference.


NB: The heat-up time will vary depending on which temperature setting you select. It is suggested to use the lower heat settings when using the appliance for the first time.

TEMPERATURE SETTING GUIDE	
SETTING 1 (GREEN) = 150°C	FINE, DAMAGED OR COLOURED HAIR
SETTING 2 (YELLOW) = 170°C	FINE, DAMAGED OR COLOURED HAIR
SETTING 3 (ORANGE) = 190°C	NORMAL HAIR
SETTING 4 (RED) = 210°C	THICKER, COARSER HAIR
SETTING 5 (RED) = 235°C	THICKER COARSER HAIR

PREMIUM STORAGE BAG WITH FOLD OUT MAT

The styler comes with a storage pouch with a fold out mat. After use, switch off & unplug the appliance & allow to fully cool down before placing the styler into the storage pouch & storing away. Keep the appliance out of the reach of children as it will remain hot for several minutes.

AUTO SHUT OFF

This styler has an automatic shut off feature for added safety. If the styler is switched on for more than 72 minutes continuously, it will automatically switch off. If you wish to continue using the styler press the button  & the styler will turn on immediately.

CARE & MAINTENANCE


To help keep your styler in the best possible condition follow the steps below:

- Do not wrap the lead around the appliance, instead coil the lead loosely by the side of the appliance.
- Do not use the appliance at a stretch from the power point.
- Always unplug after use.
- Unplug the appliance & let it cool completely before cleaning it.
- To clean the appliance, use a damp cloth with a little soft detergent, then dry carefully. Make sure the appliance is completely dry before using again.
- To protect the plates, store the straightening iron with the plates closed tightly.

IMPORTANT SAFETY INSTRUCTIONS

The following safety precautions should always be followed when using electrical appliances, especially when children are present in your household. Please read these instructions carefully & keep for future reference.

DANGER

- **WARNING:** Do not use this appliance in or near bathtubs, showers, basins or other vessels containing water. Keep the appliance dry. 
- When this appliance is used in a bathroom, unplug it after use since the proximity of water presents a hazard even when the appliance is switched off.
- If this appliance falls into water, unplug it immediately - DO NOT reach into the water.
- **WARNING:** Before & During Use
- Before using, always ensure that the voltage marked on the appliance is the same as your local power voltage.
- If the appliance is designed to be connected to a detachable power supply (otherwise known as a charger or adaptor), the appliance must only be used with the power supply it was sold with.
- Do not operate this appliance or disconnect from the power supply with wet hands.
- Never use this appliance at the same time as styling products such as aerosols (spray).
- Be very careful when handling this appliance as parts of it may get extremely hot.
- Do not place the appliance on any heat sensitive surface or near flammable materials or objects.
- Do not immerse the appliance into water or other liquids.
- Keep the cord away from heated surfaces.
- Never block the air openings of the appliance or place on a soft surface such as a bed or couch, where the air openings may be blocked. Keep the air openings free of lint & other debris.
- Do not cover this appliance with anything when it is switched on or hot.
- To avoid electric shock, do not drop or insert any object into an opening in this appliance.
- Burn hazard. Keep appliance out of reach from young children, particularly during use & cool down.
- Always place appliance with stand, if any, on a heat-resistant, stable flat surface.
- When the appliance is connected to the power supply, never leave it unattended.

WARNINGS: for Storage & Maintenance

• Always unplug the appliance immediately after use & before cleaning or maintenance.

- Do not leave the appliance unattended when plugged in or switched on.
- Always allow the appliance to cool down before storing away in a location where children cannot reach it.
- Do not store or place this appliance in a location where it can fall or be pulled into a bath or sink.
- Do not wrap the supply cord around this appliance when storing as over time this may cause damage to the cord.
- If the supply cord is damaged it must be replaced by the manufacturer, its service agent or similarly qualified persons in order to avoid a hazard.
- Never operate this appliance if it has been dropped or damaged, or if it is not working correctly.
- If this appliance is serviced by an unqualified person this could result in an extremely hazardous situation for the user. Contact Conair Customer service if you have any issues operating your styler.

CAUTION

- This appliance is not intended for use by persons (including children) with reduced physical, sensory or mental capabilities or lack of experience & knowledge unless they have been given supervision or instruction concerning use of the appliance by a person responsible for their safety.
- Children should be supervised to ensure they do not play with the appliance.
- Use this appliance only for its intended use & as described in this manual. This appliance is not intended for commercial use.
- Do not use any attachments other than those supplied by Conair Australia Pty Ltd.
- For additional protection, the installation of a residual current device (RCD) with a rated operating current not exceeding 30mA is advisable in the electrical current circuit supplying the bathroom. Ask your installer for advice.