

VS
SASSOON



CURL SECRET
THE CURL REVOLUTION



Ensure you read these
instructions before first use

vssassoon.com.au/curlsecretguide



Hair goes in, curl comes out. It's that simple.

Congratulations on your purchase of your new VS Sassoon's Curl Secret. Featuring revolutionary new patented technology; this breath-takingly innovative styler is unbelievably simple and quick to use, creating beautiful results in no time.

Adjust the heat settings to suit your hair and choose from the heat settings to get the curl style you need. Set the timer to the shorter 8 second setting for looser waves. Select 12 seconds for defined curls and adjust the setting to 10 seconds for anything in between.

As the Curl Secret is a revolutionary new type of styler it works very differently to the curling stylers you may have used in the past. As such it's important to carefully read through the instructions before using for the first time.

CURL TYPE	TIMER
LOOSE CURLS	8 or 10
MEDIUM CURLS	10
TIGHT CURLS	10 or 12



Loose Curls



Medium Curls



Tight Curls

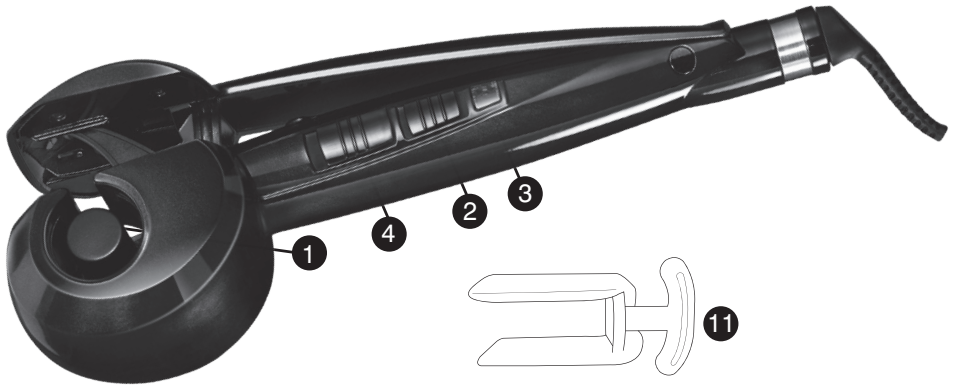
Results depend on your hair type, condition and styling products used. As you use this innovative new styler, you'll discover the settings that let you best create the curls you want. **REMEMBER:** Before starting, make sure the temperature indicator light has stopped blinking.

Fast, easy, fabulous

MAKE THE CURL SECRET YOUR CURL REVOLUTION.

FEATURES:

1. Ceramic tourmaline curl chamber
2. Power on and temperature settings
3. Temperature ready indicator
4. Timer settings with audio beep
5. Suitable for shorter and longer hair lengths
6. On/off switch with on indicator light
7. Heat ready indicator
8. Temperature shut off within 60 minutes
9. Salon length swivel cord
10. Two year warranty
11. Cleaning tool



IT'S A REVOLUTIONARY NEW WAY TO CURL YOUR HAIR.

Fast, easy and fabulous, curl after curl

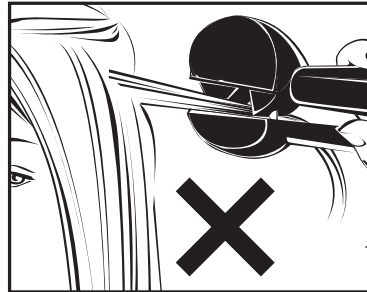
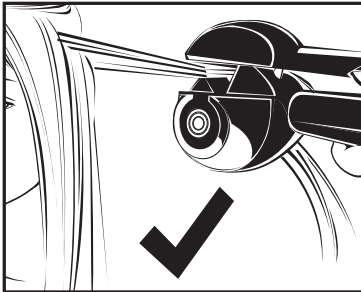
NOTE: Curl Secret's new brushless motor technology uses magnets instead of brushes to sense any change in speed, and turns itself off as an added safety feature and to ensure tangle-free curling action.

STYLING INSTRUCTIONS

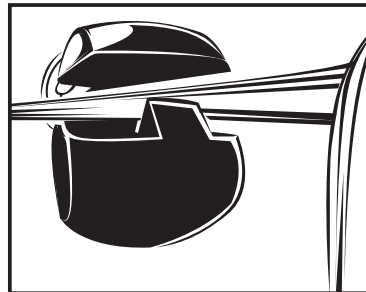
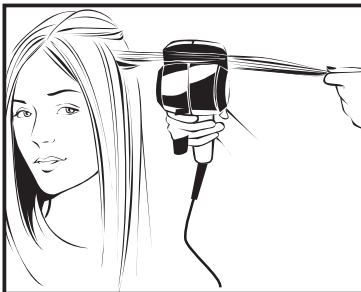
1. Section hair before styling for easier styling.
Begin by carefully combing through hair to smooth it.
Then take a ½ inch to 1 inch section.



2. Please note the styler must be positioned into the hair with the opening of the curl chamber facing toward the head.

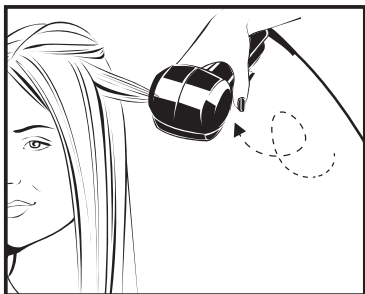


3. Position the styler where you want the curl to start.
The hair section must be straight, and placed neatly through the center of the hair guide

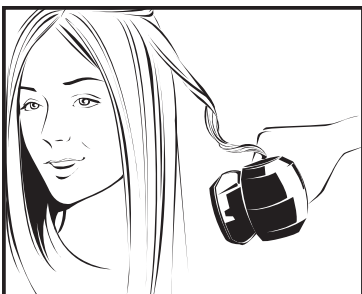


STYLING INSTRUCTIONS

4. Once the hair is in place, let go of the hair section and close the handle to allow the hair to be automatically taken into the curl chamber



5. The styler will begin to emit a series of slow timing "beeps" to indicate the styler is in curling mode.
6. Once you hear a series of 4 fast timing "beeps" the curling mode has completed and the styler handle should be released.
7. Open the Curl Secret and gently pull it away from the head to release a perfect curl!



If you would like to see Curl Secret demonstrated please visit
www.vssassoon.com.au/curlsecretguide
to view a detailed instructional video guide.

OPERATING INSTRUCTIONS

TO CURL HAIR

The secret to Curl Secret is how easy it makes creating the perfect curl – **a tight spiral, a big loose curl, even a relaxed wave – one after another!**

Hair goes in, curl comes out. It's that simple. For best results, start with freshly washed and dried hair and apply a styling mousse or heat protective product. Not only will this help protect your hair, it will also aid in getting the style to last. If you are curling the lower layers first, you might want to clip some hair out of the way.

Hair should be clean, completely dry and combed before you use the curling device. Place the styler on the provided heat protection mat on a stable surface. Plug the styler's power cord into an electrical outlet and turn on the power switch.

- Setting I - for more delicate, fine or coloured hair
- Setting II - for thicker or harder to curl hair

• Using the heat settings

Select the required temperature setting by sliding the heat selector switch from the "0" Off setting to position "I" or position "II".

We recommend you always start with the lowest temperature setting and increase the level of heat as required. The RED light will blink while Curl Secret is heating up. The RED light must stop blinking and be steady before curling hair.

WARNING: The styler's tourmaline ceramic-coated curl chamber will get very hot within a few seconds and should not be placed in contact with the skin after the styler has been turned on.

As with all heated styling appliances we do not recommend using them on damaged or chemically bleached hair that is in poor condition. Please consult with your hairdresser for further advice before using. Do not use the 'II' high heat setting on damaged or bleached hair.

• Using the timer settings

Decide what type of curl you'd like – spirals or tighter curls, which can be shaped into a vintage chic style, or bigger curls or relaxed waves, which are beautiful on their own, and can be tousled into a natural "undone" look.

For spirals or tighter curls, choose the 10- or 12-second timer setting. For a looser curl or wave, we recommend the low setting and the 8- or 10-second timer setting.

IMPORTANT

If you continue to hold the hair section after closing the handle, Curl Secret will stop and emit a series of fast beeps to indicate that you must release the tension on the hair.

If you have taken too much hair, or hair is not neatly going through the center of the appliance, the Curl Secret will again stop and emit a series of fast beeps to indicate a problem. This safety feature ensures there will be no tangles.

When you hear these beeps, simply release the styler, comb hair section and reduce the hair section before restyling.

NOTE: Always release the handles first to set the curl free; if you pull away before you open the handles, the curl will be straightened out.

- To allow the curl to set, do not comb or brush the hair until it cools.
- Repeat around the head until you have the amount of curls desired.

After you have completed curling and your curls have cooled you can continue styling or just run your fingers through your curls to break them up and achieve a natural beachy curl look.

Finish off with a light spray of quality hair spray to give the curls extra hold to last longer and protect from moisture.

INCLUDED ACCESSORIES

HEAT PROTECTION MAT

Always place the appliance on the heat resistant mat whilst the styler is heating up and during styling to protect work surfaces.

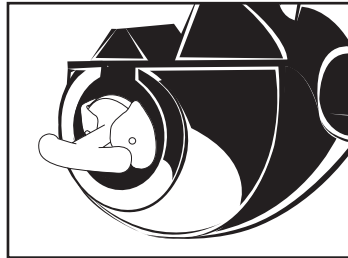
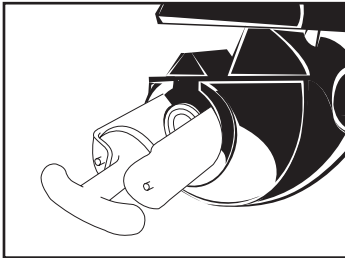
SOFT STORAGE POUCH

Wait until the styler has cooled down completely before storing in the soft pouch. The pouch is not heat resistant.

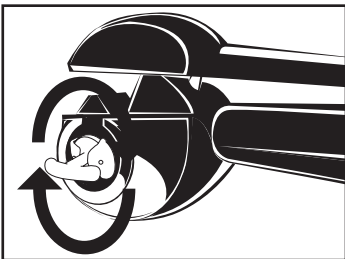
CLEANING & MAINTENANCE

It is very important to use the cleaning tool included to regularly clean the curl chamber. This will prevent a build-up of product to ensure the curls produced are always perfectly formed.

- Ensure the appliance is switched off, unplugged and cool
- Lightly dampen the cleaning tool with warm water and mild detergent or soap.
- Insert the tool fully into the curl chamber cavity as per the diagrams below.



- Rotate the tool around the curl chamber to remove any build-up of product.



- Ensure the appliance has dried thoroughly before re-using.
- The cleaning tool can be used numerous times; just remove the felt pads, rinse them in warm soapy water and leave to dry before using again.

IMPORTANT SAFETY INSTRUCTIONS

SAFETY CAUTIONS

• This appliance should only be used as described within this instruction booklet.

WARNING! Polythene bags over product or packaging may be dangerous. To avoid danger of suffocation, keep wrapper away from babies and children. These bags are not toys.

WARNING! Do not use this appliance near water contained in basins, bathtubs or other vessels.

- Do not use the appliance in the bathroom.
- Do not immerse the appliance in water or other liquids.
- Always inspect the appliance before use for noticeable signs of damage.
- Do not use if damaged, or if the appliance has been dropped.
- In the event of damage, contact the Conair Customer Care Line 1800 268 806.
- Do not leave the appliance unattended when switched on or plugged in.
- Do not place the appliance on any heat sensitive surface whilst in operation.
- In the event of the appliance left switched on, the appliance will automatically shut off after 60 minutes. If you wish to continue using the appliance after this time, simply slide the switch to off position and then slide to the relevant setting to turn the power on.
- Take care to avoid the hot surface of the appliance coming into direct contact with the skin, in particular the eyes, ears, face and neck
- This appliance should not be used by adults who's reduced physical, sensory or mental capabilities, or whose lack of experience and knowledge, might cause a hazard, unless they have been correctly instructed to understand the safe use and hazards involved and are adequately supervised.
- Careful adult supervision is required when this appliance is used on or near children. Do not use on very young children.
- This appliance should not be used, cleaned or maintained by children. Keep out of reach of children.
- Always ensure that this appliance is kept out of the reach of children at all times, particularly during use and whilst cooling.
- Allow appliance to cool before storing away.
- After use, do not wrap the lead around the appliance as this may cause damage. Instead, coil loosely by the side of the appliance.
- For additional protection, the installation of a residual current device (RCD) with a rated operating current not exceeding 30mA is advisable in the electrical current circuit supplying the bathroom.

ASK YOUR INSTALLER FOR ADVICE.

WARNING

Never leave your styler on and unattended or use around children.

However, should you fail to turn the styler off, it will shut itself off automatically after 60 minutes.

AUTO SHUT OFF

This appliance has an automatic shut off feature for added safety. If the appliance is switched on for more than 60 minutes continuously, it will automatically switch off. If you wish to continue using the appliance after this time, simply slide the switch to off position and then slide to the relevant setting to turn the power on.

SLEEP MODE

This appliance has an automatic sleep mode feature. If the appliance is not used for more than 20 minutes the temperature will automatically drop down by 50°C. If you wish to continue using the appliance after this time, simply close then release the handles and it will return to the temperature setting you were using it on.

NOTE: CURL CHAMBER WILL BE HOT TO THE TOUCH.

SAVE THESE INSTRUCTIONS

Scan here to see a
detailed instructional
video guide



Not keen to scan? Visit www.vssassoon.com.au/curlsecretguide
to get access to the same video

CONAIR®

Vidal Sassoon and related logos are trademarks of
The Procter & Gamble Company used under license by Conair

©2014 Conair Australia Pty, Ltd.
Suite 101, 18 Rodborough Rd
Frenchs Forest NSW, 2086
Australia

Customer Service Hotline (Australia): 1800 650 263
Customer Service e-mail: aus_info@conair.com

Conair New Zealand Ltd.,
PO Box 251159, P. akuranga,
Auckland, 1706,
New Zealand

Customer Service Hotline (New Zealand): 0800 266 247

vssassoon.com.au

VSP2667A