

IMPORTANT SAFETY INSTRUCTIONS

When using electrical appliances, especially when children are present, basic safety instructions should always be followed, including the following:

Polythene bags over product or package may be dangerous. To avoid danger of suffocation, keep this wrapper away from babies and children. This bag is not a toy.

DANGER:

When the unit is used in a bathroom, unplug it after use since the proximity of water presents a hazard even when the unit is switched off.



WARNING: Do not use this appliance in or near bathtubs, showers, basins or other vessels containing water.

- Do not immerse in water or other liquids.
- Do not reach for an appliance that has fallen into water. Unplug immediately.
- Take care to avoid contact between the hot surfaces of the unit and the skin, paying particular attention to the face, neck and hands.
- This appliance is not intended for use by infirm persons (including children) with reduced physical, sensory or mental capabilities, or lack of experience and knowledge, unless they have been given supervision or instruction concerning use of the appliance by a person responsible for their safety.
- Children should be supervised to ensure that they do not play with the appliance.

IMPORTANT: Always unplug the appliance when not in use or before cleaning. Do not leave unattended when plugged in or switched on. Do not place on any heat-sensitive surface and always allow to cool before storing away.

- Do not use any attachments other than those supplied by Conair Australia Pty Ltd.
- Use this appliance only for its intended use as described within this instruction booklet.
- This appliance is not intended for commercial use.
- Never drop or insert any object into an opening.
- Never block the air openings of the appliance or place on a soft surface such as a bed or couch, where the air openings may be blocked. Keep the air openings free of lint and other debris.
- Attachments may get hot during use. Allow them to cool before handling.
- Do not use outdoors or operate where aerosol (spray) products are being used or where oxygen is being administered.
- Keep the cord away from heated surfaces.
- Do not use an extension cord with this appliance.
- If the supply cord is damaged, it must be replaced by the manufacturer, its service agent or similarly qualified persons in order to avoid a hazard.
- After use do not wrap the cord around the appliance as in time this may cause the cord to fracture. Coil cord loosely by the side of the appliance in storage.
- Always ensure that the voltage to be used corresponds to the voltage marked on the unit.
- For additional protection, the installation of a residual current device (RCD) with a rated operating current not exceeding 30mA is advisable in the electrical current circuit supplying the bathroom. Ask your installer for advice.

VS Ombre Dryer Set

VS Sassoon's Ombre dryer has the latest technology with powerful 2000W for fast drying. It features 3 heat and 2 speed settings for styling control with Ionic conditioning technology™ and Ceramic technology™ for silky and shiny hair with reduced frizz.



Features:

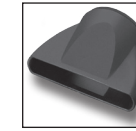
1. 2000 watts
2. Ionic conditioning technology™
3. Ceramic technology™
4. 3 heat & 2 speed settings
5. Cool shot
6. Concentrator nozzle
7. Hanging loop
8. Cushion brush
9. Sectioning Clips x 4

How to use your Ombre 2000W Hairdryer

This dryer features a powerful 2000W for fast airflow to dry the hair quickly.

1. Wash and condition your hair as usual.
2. Always towel-dry your hair before using the dryer.
3. Ensure the switch is set to the off ('0') setting before plugging into a suitable power outlet.
4. There are 3 heat and 2 speed settings, plus the cool shot button.
 - a. Use the high heat and speed settings for initial drying and the lower heat and speed settings to finish drying and for styling.
 - b. The low heat is also best for fine or damaged hair.
5. Use the cool shot button on warm hair to rapidly cool the hair and set the style in place for a longer-lasting effect.

The Attachments:



Slim Concentrator -

Use the concentrator nozzle for directing airflow just where you want it, to ease styling and straightening. For additional control use one of the lower settings and point the airflow along the surface of the hair to be dried.

CAUTION: Take care not to direct the airflow directly onto the skin (e.g. scalp, neck ears, face, etc.) as hot air from the hairdryers can, particularly if held too close, cause discomfort or even burns.

What is Ionic conditioning technology™?

Many aspects of modern living, including air conditioning, contact with man-made fibres and air pollution add to the build-up of static electricity in the hair. Even brushing and towel-drying the hair can increase these levels. This static charge causes the scales, or cuticles of the hair, to push hair strands apart, resulting in a rough hair surface. Consequently, hair may have a dull appearance.

High levels of static charge cause hair to become 'flyaway' and difficult to style. The advanced internal ionic generator conditions hair by emitting negative ions to reduce static, by leaving hair silky and shiny with reduced frizz.

What is Ceramic technology™?

Ceramic technology™ delivers even heat distribution, helping to reduce harmful and damaging hotspots. Ceramic helps to retain heat longer and provides quicker results than non-ceramic styling tools.

Cleaning and Maintenance

To help maintain optimum performance and prevent overheating of the hairdryer, the rear filter should be cleaned on a regular basis.

- Ensure that the appliance is switched off, unplugged from the power outlet and has cooled down.
- Holding the handle of the dryer, grip the rear filter and turn anti-clockwise, as far as the rear filter will turn and pull away from the dryer.
- Using a soft brush, clean any hair and other debris that may build up in the filter.
- Replace the rear filter by aligning the grooves and turning clockwise, until the rear filter has clicked back into position.

Limited Two-Year Warranty

This product is subject to the express warranty given on the warranty card included with the product, as may be amended by reference to and in accordance with the terms of the warranty cards displayed on VS Sassoon website www.vssassoon.com.au

To make a warranty claim you must retain your proof of purchase. Further details can be found at www.vssassoon.com.au and click on 'customer service'.

Get more from your styling tools, visit
www.vssassoon.com.au
for news, styling tips and much more.

Vidal Sassoon and related logos are trademarks of
The Procter & Gamble Company used under licence by Conair
©2013 Conair Corporation USA, 1 Cummings Point Rd,
Stamford, Connecticut, 06902 USA
Conair Australia Pty Ltd
Suites 20 and 21,
7 Narabang Way, Belrose NSW 2085
Customer Service Hotline (Australia): 1800 650 263
Customer Service e-mail: aus_info@conair.com
Conair New Zealand Ltd.,
PO Box 251159, Pakuranga, Auckland, 1706, New Zealand
Customer Service Hotline (New Zealand): 0800 266 247

VS
SASSOON

VS
SASSOON



instruction booklet
Ombre Dryer

VS5737CA

LONDON • NEW YORK • SYDNEY
JOIN THE EVOLUTION.™