

## IMPORTANT SAFETY INSTRUCTIONS

When using electrical appliances, especially when children are present, basic safety instructions should always be followed, including the following: Polythene bags over product or package may be dangerous. To avoid danger of suffocation, keep this wrapper away from babies and children. This bag is not a toy.

**DANGER:** When the unit is used in a bathroom, unplug it after use since the proximity of water presents a hazard even when the unit is switched off.

**WARNING:** Do not use this appliance in or near bathtubs, showers, basins or other vessels containing water.

- Do not immerse in water or other liquids.
- **Do not reach for an appliance that has fallen into water. Unplug immediately.**
- Take care to avoid contact between the hot surfaces of the unit and the skin, paying particular attention to the face, neck and hands.
- This appliance is not intended for use by persons (including children) with reduced physical, sensory or mental capabilities, or lack of experience or instruction concerning use of the appliance by a person responsible for their safety.
- Children should be supervised to ensure they do not play with the appliance.



**IMPORTANT:** Always unplug the appliance when not in use or before cleaning. Do not leave unattended when plugged in or switched on.

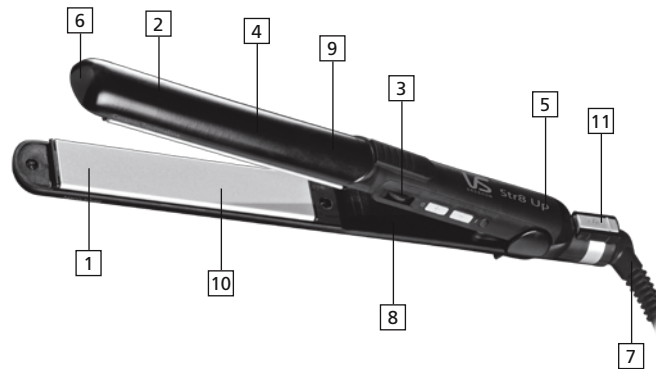
Do not place on any heat sensitive surface and always allow to cool before storing away.

- Do not use any attachments other than those supplied by Conair Australia Pty Ltd.
  - Use this appliance only for its intended use and as described in this instruction booklet.
  - This appliance is not intended for commercial use.
  - Never drop or insert any object into an opening.
  - Never block the air openings of the appliance or place on a soft surface such as a bed or couch, where the air openings may be blocked. Keep the air openings free of lint and other debris.
  - Do not use outdoors or operate where aerosol (spray) products are being used or where oxygen is being administered.
  - Keep the cord away from heated surfaces.
  - Do not use an extension cord with this appliance.
  - If the supply cord is damaged it must be replaced by the manufacturer, its service agent or similarly qualified persons in order to avoid a hazard.
  - After use do not wrap the cord around the appliance as in time this may cause the cord to fracture. Coil cord loosely by the side of the appliance in storage.
  - Always ensure that the voltage to be used corresponds to the voltage marked on the unit.
  - For additional protection, the installation of a residual current device (RCD) with a rated operating current not exceeding 30mA is advisable in the electrical current circuit supplying the bathroom.
- Ask your installer for advice.

**NB:** This appliance has a safety automatic shut-off system, which will automatically turn the appliance off if left switched on accidentally for 72 minutes. If this occurs please wait for appliance to cool. Switch the appliance off and unplug the power cord.

## Str8 Up Straightener

VS Sassoon's Str8 Up Straightener heats up to 230°C for fast straightening with surround heat designed for creating curls. It features ceramic tourmaline nano silver floating plates for smooth results and it's multi voltage so you can take it with you all over the world.



### Features:

1. Ceramic tourmaline floating plates
2. Up to 230°C
3. Variable temperature settings
4. Uniform heat recovery system
5. Multi voltage (120/240VAC)
6. Cool touch ends
7. Swivel power cord
8. Fast heat up in 30 seconds
9. Slimline design
10. 120mm long plates
11. Locking switch

### How to use your Str8 Up Straightener:

For use on dry hair only.

- Remove all packaging and sale labels before use.
- Wash and condition your hair as usual. Ensure that hair is dry, combed through and tangle-free.
- A plastic cover has been placed over the plug to protect it from damage. Remove the plastic cover before inserting into power outlet.
- Plug the appliance into a suitable power outlet and press the on (I) button. The red indicator light will turn on and start to flash.
- Select the desired temperature using the temperature dial. Please see 'How to use the variable temperature settings' for more information.
- Allow the straightener to heat up, the red light will stop flashing when the unit has heated up to the selected temperature. Your straightener is now ready to use.
- To turn appliance off, press the off (O) button and the red indicator light will turn off. Unplug the appliance from the power outlet and allow to cool before storing.

### IMPORTANT:

Hair that has been heavily bleached or chemically treated should only use the low heat settings on this product. Please consult your hairdresser on using heated appliances if you have any concerns about the condition of your hair.

## How to use the variable temperature settings

The variable temperature settings provide variable heat for many different hair types. These settings allow you to choose the required temperature setting according to your particular need and hair type. **NB:** The heat-up time will vary depending on which temperature setting you select. It is suggested to use the lower heat settings when using the appliance for the first time.

**WARNING:** This appliance is suitable for average use on the medium high heat setting of 200°C. The 215°C and 230°C maximum high heat settings are not suitable for hair that has been chemically treated, bleached or damaged.

**DO NOT USE THIS PRODUCT ON HEAT DAMAGED OR CHEMICALLY TREATED HAIR ON THE HIGHER HEAT SETTINGS.**

Temperature Setting Guide	
Variable Temperature Control Settings	Hair Type
Low Setting - 130°C	Delicate, fine, bleached hair
Medium Setting - 180°C	Average to thick, treated hair
Medium High Setting - 200°C	Thick or wavy hair
High Setting - 215°C	Hard to straighten, thick hair
Maximum Setting - 230°C	Hard to straighten, very thick curly hair

## Multi Voltage

This straightener has a multi voltage feature for worldwide use. The voltage automatically converts for ease of use from 120/240VAC. **NOTE:** This straightener has an internal automatic converter which will automatically convert the voltage without the need of a switch. A suitable plug adaptor will be required, please refer to the chart below.

Plug adaptor required	Voltage and plug adaptors	Country
	British plug: 230V	Ireland, Great Britain, Singapore, South America, Hong Kong (parts only), Africa (parts only)
	European plug: 230V	Asia, Europe, Middle East Noumea, Scandinavia, South America, Hong Kong (parts only)
	Australian & New Zealand plug: 240V	Australia, New Zealand
	American plug: 120V	North America, Japan, Canada (parts of)

#### How to use the locking switch?

The locking switch is used to hold the plates together when the straightener is not in use for easy and convenient storage. After use, turn the appliance off and allow to cool. Hold the straightener handle together and slide the locking switch across to secure the plates. To unlock, simply slide the locking switch in the other direction.



#### Automatic Safety Cut Off System

This appliance has an automatic safety cut off system which will automatically turn the appliance off if left on accidentally for 72 minutes. If this occurs, please wait for appliance to cool. Switch the appliance off and unplug the power cord. Plug the power cord in and switch the appliance on.

#### What is ceramic tourmaline nano silver technology?

Ceramic tourmaline nano silver technology unites micro particles of nano silver, tourmaline and ceramic when combined with heat seals the hair cuticle to leave hair with reduced frizz and enhanced shine.

#### User Maintenance

Your straightener is designed for household use and is virtually maintenance-free. No lubrication is needed. If cleaning becomes necessary, disconnect the appliance from the power outlet. Allow the straightener to cool and wipe exterior with a cloth. If any abnormal conditions occur, unplug the appliance, allow to cool and return it to your place of purchase.

#### Two-Year Warranty

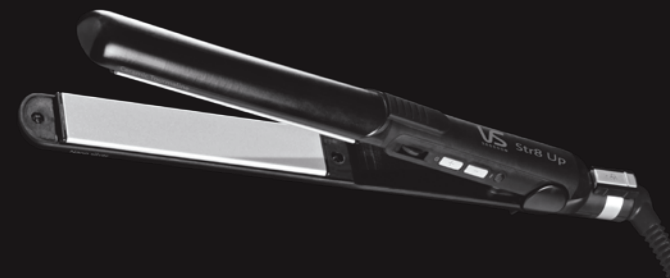
Conair Australia Pty Ltd. will repair or replace (at our option) your appliance free of charge for twenty-four months from the date of purchase if the appliance is defective in workmanship or materials. This warranty is an additional benefit and does not affect your legal rights. To obtain service under this warranty, please fill in and return the Warranty Registration as instructed.

Get more from your styling tools, visit  
[www.vssassoon.com.au](http://www.vssassoon.com.au)  
for news, styling tips and much more.

Vidal Sassoon and related logos are trademarks of  
The Procter & Gamble Company used under licence by Conair  
©2010 Conair Australia Pty Ltd  
Suites 20 and 21,  
7 Narabang Way, Belrose NSW 2085  
Customer Service Hotline (Australia): 1800 650 263  
Customer Service e-mail: [aus\\_info@conair.com](mailto:aus_info@conair.com)  
Conair New Zealand Ltd.,  
PO Box 251159, Pakuranga, Auckland, 1706, New Zealand  
Customer Service Hotline (New Zealand): 0800 266 247

**VS**  
SASSOON

**VS**  
SASSOON



instruction booklet  
Str8 Up Straightener

VS2010A

LONDON • NEW YORK • SYDNEY  
**JOIN THE EVOLUTION.™**