

VS
SASSOON

FOR MEN



THE TRIM & GROOM

TOOL TIPS

for the precision beard & stubble trimmer
for perfect facial grooming.

VSM856A

HEY YOU!
TAKE A BOW FINE SIR.

THINGS ARE LOOKING UP
& **YOU'VE JUST MADE A
QUALITY PURCHASE**
WITH THIS NEW GROOMING TOOL.

WE KNOW YOU'VE GOT THIS, BUT BEFORE YOU JUMP INTO
USING YOUR NEW SIDE KICK, HERE'S A FEW TIPS & TRICKS
TO KNOW BEFORE LETTING YOUR CREATIVITY RUN LOOSE.

HIT UP **VIFORMEN.COM.AU** FOR MORE GROOMING & INSPIRATION.



IMPORTANT SAFETY INSTRUCTIONS

When using electrical appliances, especially when children are present, basic safety instructions should always be followed, including the following:

Polythene bags over product or package may be dangerous. To avoid danger of suffocation, keep this wrapper away from babies and children. This bag is not a toy.

DANGER: When the unit is used in a bathroom, unplug it from the mains power after use since the proximity of water presents a hazard even when the appliance is switched off.



WARNING: Do not use or leave the AC power adaptor in a position where it can become wet or there is a danger of it falling into a basin or other vessels containing water. Keep the appliance dry, unless it otherwise specified. Do not use this appliance in or near bathtubs, showers, basins or other vessels containing water.

- Do not immerse appliance in water or other liquids.
- Do not reach for an appliance that has fallen into water. Unplug immediately.
- Take care to avoid contact between the moving blades of the unit and the skin, paying particular attention to the face, neck and hands.
- This appliance is not intended for use by persons (including children) with reduced physical, sensory or mental capabilities, or lack of experience and knowledge, unless they have been given supervision or instruction concerning use of the appliance by a person responsible for their safety.
- Children should be supervised to ensure that they do not play with the appliance.

IMPORTANT: Always unplug the appliance when not in use or before cleaning. Do not leave unattended when plugged in or switched on. Do not place on any heat sensitive surface.

- Do not use any attachments other than those supplied by Conair Australia Pty Ltd.
- Use this appliance only for its intended use as described within this instruction booklet.
- Always unplug the appliance when fully charged.
- This appliance is not intended for commercial use.
- Never drop or insert any object into an opening.
- Do not use the appliance with damaged or broken attachment combs or with any teeth missing from the blades, as injury may occur.
- Do not place on any surface while it is operating.
- Keep the cord away from heated surfaces
- Never twist or pull on the power cord.
- Do not use an extension cord with this appliance.
- After use do not wrap the cord around the appliance as in time this may cause the cord to fracture. Coil cord loosely by the side of the appliance in storage.
- Do not use outdoors or operate where aerosol (spray) products are being used or where oxygen is being administered.
- Do not use the appliance if it is damaged. In the event of damage, discontinue use immediately and contact your dealer for instructions on returning it for examination or exchange. If the supply cord is damaged, it must be replaced by the manufacturer, its service agent or similarly qualified person in order to avoid a hazard.
- Always ensure that the voltage to be used corresponds to the voltage marked on the unit.
- For additional protection, the installation of a residual current device (RCD) with a rated operating current not exceeding 30mA is advisable in the electrical current circuit supplying the bathroom. Ask your installer for advice.

THE TRIM & GROOM

BRAVO. YOU'VE MADE A QUALITY PURCHASE.

The Trim & Groom is the precision beard & stubble trimmer for perfect facial grooming.



- 1. Cordless use
- 2. Precision W-Tech blades
- 3. 34mm wide trimming blade
- 4. 1 comb guide with 18 positions (1mm to 18mm)
- 5. Integrated dial adjusts settings in 1mm steps
- 6. Easy to read LED display of selected length
- 7. Washable head for your cleanest cut
- 8. Cleaning brush
- 9. Oil
- 10. Adaptor

PREPPING YOUR NEW TOOL

CHARGING

The Trim & Groom trimmer is so easy to use. But before you start using your new tool, you must take the time to charge it overnight for **16 hours** before its first use. Your new tool comes with a small amount of charge, but the initial charge will ensure your new tool will have optimum power performance to give you smooth fast cutting, every time.

- Before using for the first time, fully charge your new tool continuously for 16 hours. After the first charge all subsequent charges should be 8 hours.
- Maximum battery capacity will only be reached after 3 charging & discharging cycles.
- Ensure your new tool is switched off.
- Insert the small plug on the charging adaptor into the socket on the bottom of the trimmer.
- Plug the charging adaptor into a suitable mains power socket and switch on.
- The red LED charging indicator light will switch on when connected to mains power. The LED light will continue to remain on whilst charging and once charged.
- A full charge will take 8 hours and will supply 45 minutes cordless runtime.
- To maintain optimum capacity of the rechargeable battery, it is highly recommended to fully discharge & then recharge your tool for 8 hours every 3 months.

HOW TO USE THE TRIM & GROOM

BEFORE USING

- Always inspect the trimmer blades for noticeable signs of damage.
- Always inspect the trimmer blades before use to ensure they are free from hair, debris etc.
- Ensure the trimmer is sufficiently charged before use.
- For best performance use on clean hair that has been combed until tangle-free.

SELECTING A CUTTING LENGTH

The Trim & Groom comes with 1 comb guide with 18 positions (1mm to 18mm) for crafting all types of beard and stubble + an integrated grooved dial that adjusts the trimming settings in 1mm steps. Simply turn the dial left to right / right to left to your desired cutting length setting.

The cutting lengths are displayed on the LED screen in 'mm'. The length setting on the LED screen will change as you adjust the dial.

GOOD TO NOTE: Always put the comb guide on BEFORE turning the trimmer on, and turn the trimmer off before removing it.

To remove the cutting guide, first adjust the cutting length to maximum (18 mm). With the trimmer switched off, slowly pull the comb guide upwards and away from the trimmer body to remove.

To replace the cutting guide, first adjust the cutting length to minimum (1 mm). With the trimmer switched off, clip on one side and then the other side of the comb guide.

Use the grooved dial to select the desired cutting length.

WASHABLE HEAD

The head of the trimmer can be washed under running water, as long as the trimmer is switched off and unplugged from the mains power. Make sure

the head is thoroughly dry before using the trimmer again.

NOTE! The handle of the unit is not designed to be exposed to water. Do not use the trimmer in the shower or in the bath.

TRIMMING TIPS

Hit up www.vsformen.com.au for more grooming tips & inspiration.

USING THE TRIMMING BLADES + COMB GUIDE

1. Switch the trimmer on by sliding the On/Off button.
2. Select your desired cutting length. To adjust the cutting length of your trimmer, simply turn the dial left to right / right to left to your desired cutting length setting.
3. When trimming, hold the comb guide flat against the skin. For the most precise, consistent trim, the tips of the teeth and the little corners protruding from the comb should always be in contact with the skin. If not, the precision of the cut may change. (Fig. 1-2).
4. It is suggested to trim the hair in the direction of hair growth, as trimming against the direction of growth could cause a rash or irritation.
5. Pull the skin firmly with one hand during the trimming process to ensure the closest trim possible.
6. Move the trimmer slowly and carefully, so as not to cut any hair you do not intend to trim.
7. Trim, shape and define your facial hair as needed.

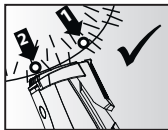


Fig. 1

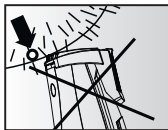


Fig. 2

BE CAREFUL NOT TO APPLY EXCESS PRESSURE TO THE BLADE, AS THIS MAY DAMAGE THE BLADE AND CAN RESULT IN INJURY TO THE SKIN DURING TRIMMING.

TRIMMER CLEANING & MAINTENANCE

Because the trimmer blades are precision made for a very special use, they should always be handled with care. To ensure long-lasting performance of your trimmer, it is important to clean the blades + the comb guide after every use.

The blades are washable for easy cleaning.

To remove the trimming blade, make sure that the trimmer is switched off and the cutting comb guide is removed. Hold the trimmer with the blades pointing up and remove them by pressing their points.

To clean the blades:

1. First, take a small brush and brush away any loose hairs that have collected in the blades.
2. Rinse the trimming blades under running water. The comb guide can also be rinsed separately.
3. After cleaning, make sure to shake off excess water and dry the head of the trimming blades + comb guide before replacing onto the handle.

OIL FREE TRIMMING BLADES, THE WAY IT SHOULD BE

The blades of your trimmer have a reservoir pad for releasing the necessary amount of oil for proper operation, time after time. Nevertheless, it is recommended that the reservoir pad be refilled occasionally when you notice cutting performance is not as high.

To remove the trimming blade, follow the instructions above. Squeeze a few drops of oil onto the reservoir pad (Fig. 3), then replace the blades on the trimmer.

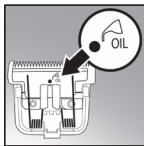


Fig. 3

GOOD TO NOTE: BEFORE RE-ATTACHING THE BLADES TO THE TRIMMER, ENSURE THEY ARE DRY AND THE MOVING BLADE IS IN THE CENTRE (FIG. 4)

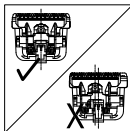






Fig. 4

WORLDWIDE VOLTAGE

This appliance has a multi voltage feature for worldwide use. The voltage automatically converts for ease of use from 100v - 240v. This appliance has an automatic internal converter which will automatically convert the voltage without the need of a switch. A suitable plug adaptor will be required, please refer to the chart below.

Plug adaptor required	Voltage and plug adaptors	Country	Voltage setting
	British plug: 240V	Ireland, Great Britain, Singapore, South America, Hong Kong (parts only), Africa (parts only)	240V
	European plug: 240V	Asia, Europe, Middle East Noumea, Scandinavia, South America, Hong Kong (parts only)	240V
	Australian and New Zealand plug: 240V	Australia, New Zealand	240V
	American plugs: 120V	North America, Japan, Canada (parts of)	120V

BATTERY DISPOSAL

The Trim & Groom uses a Nickel Metal-Hydride battery. To protect the environment, the appliance must be disposed of safely at the end of its useful life.



NI-MH

Please take the appliance to a recycling centre, where the internal rechargeable battery should be removed by a professional and recycled separately.

For more information about the recycling of electrical and battery operated appliances, please contact your local council office or your household waste disposal service.

LIMITED TWO YEAR WARRANTY

Our goods come with guarantees that cannot be excluded under the Australian Consumer Law. You are entitled to a replacement or refund for a major failure and for compensation for any other reasonably foreseeable loss or damage. You are also entitled to have the goods repaired or replaced if the goods fail to be of acceptable quality and the failure does not amount to a major failure. In New Zealand our goods come with a guarantee that cannot be excluded under the Consumer Guarantee Act 1993.

Conair Australia Pty Ltd. will repair or replace (at our option) your appliance free of charge for twenty-four months from the date of purchase if the appliance is defective in workmanship or materials.

This warranty is an additional benefit and does not affect your legal rights. To obtain service under this warranty, please read the Warranty Leaflet included or contact Conair Customer Service at aus_info@conair.com.

**TO MAKE A WARRANTY CLAIM YOU MUST
RETAIN YOUR PROOF OF PURCHASE.**

VS
SASSOON

FOR MEN



THE TRIM & GROOM

TOOL TIPS

for the precision facial trimmer
for detail trimming & touch-ups.

VSM856A (VS7051A)

HEY YOU!
TAKE A BOW FINE SIR.

THINGS ARE LOOKING UP
& **YOU'VE JUST MADE A
QUALITY PURCHASE**
WITH THIS NEW GROOMING TOOL.

WE KNOW YOU'VE GOT THIS, BUT BEFORE YOU JUMP INTO
USING YOUR NEW SIDE KICK, HERE'S A FEW TIPS & TRICKS
TO KNOW BEFORE LETTING YOUR CREATIVITY RUN LOOSE.

HIT UP VSFORMEN.COM.AU FOR MORE GROOMING & INSPIRATION.



IMPORTANT SAFETY INSTRUCTIONS

When using electrical appliances, especially when children are present, basic safety instructions should always be followed, including the following:

Polythene bags over product or package may be dangerous. To avoid danger of suffocation, keep this wrapper away from babies and children. This bag is not a toy.

DANGER: When the unit is used in a bathroom, remove the batteries after use since the proximity of water presents a hazard even when the appliance is switched off.



WARNING: Do not use or leave the trimmer in a position where it can become wet or there is a danger of it falling into a basin or other vessels containing water. Keep the appliance dry, unless it otherwise specified. Do not use this appliance in or near bathtubs, showers, basins or other vessels containing water.

- Do not immerse appliance in water or other liquids.
- Do not reach for an appliance that has fallen into water.
- Take care to avoid contact between the moving blades of the unit and the skin, paying particular attention to the face, neck and hands.
- This appliance is not intended for use by persons (including children) with reduced physical, sensory or mental capabilities, or lack of experience and knowledge, unless they have been given supervision or instruction concerning use of the appliance by a person responsible for their safety.
- Children should be supervised to ensure that they do not play with the appliance.

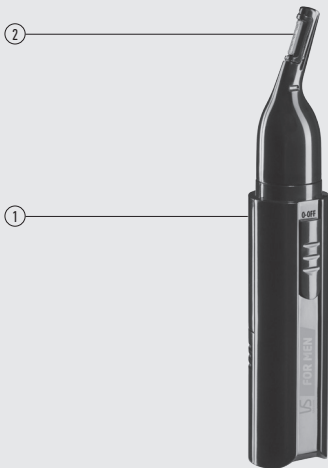
IMPORTANT: Always ensure the appliance is switched off when not in use or before cleaning. Do not leave unattended when switched on. Do not place on any heat sensitive surface.

- Do not use any attachments other than those supplied by Conair Australia Pty Ltd.
- Use this appliance only for its intended use as described within this instruction booklet.
- This appliance is not intended for commercial use.
- Never drop or insert any object into an opening.
- Do not place on any surface while it is operating.
- Do not use outdoors or operate where aerosol (spray) products are being used or where oxygen is being administered.
- Do not use the appliance if it is damaged. In the event of damage, discontinue use immediately and contact your dealer for instructions on returning it for examination or exchange.

THE TRIM & GROOM

BRAVO. YOU'VE MADE A QUALITY PURCHASE.

The Trim & Groom Precision Facial Trimmer is ideal for detail trimming & touch-ups.



1. Battery operated personal groomer
2. Linear trimming blade attachment

PREPPING YOUR NEW TOOL

INSERTING THE BATTERY

- To insert the AA battery, first ensure that the trimmer is switched off, Then remove the battery compartment cover at the back of the appliance by pulling straight down. Insert the AA battery, negative end up.
- If the appliance remains unused for a while or if the battery has run down, remove from the appliance. This will increase the life of the trimmer.
- After inserting the battery, replace the battery compartment cover.
- Always purchase the correct size and grade of battery most suitable for intended use.
- Clean the battery contacts and also those of the appliance prior to battery installation.
- Ensure the battery is installed correctly with regard to polarity (+ and -).
- Exhausted batteries are to be removed from the appliance and safely disposed of.
- When the battery has run down, it should be disposed of at a recycling centre to safeguard the environment. If the battery leaks avoid touching and dispose of at a recycling centre.
- Non-rechargeable batteries are not to be recharged.
- Store unused batteries in their original packaging, away from metal objects that could short-circuit them. Never short-circuit batteries.

BEFORE USING

- Always inspect the trimmer for noticeable signs of damage.
- Always inspect the trimmer before use to ensure the blades are free from hair, debris etc.
- Ensure the battery is correctly inserted before use.
- For best performance use on clean, dry hair that has been combed until tangle-free.

REMOVING THE TRIMMING BLADE

To remove a trimming blade, turn the head counter clockwise until the 'I' mark aligns with the "←" mark, then lift the head gently.

To attach a trimming blade, align the 'I' mark on the base of the trimmer head with the "←" mark on the body and then turn clockwise until the marks are aligned and locked into position.

TRIMMING TIPS

Hit up www.vsformen.com.au for more grooming tips & inspiration.

USING THE LINEAR TRIMMING BLADE

1. Switch the trimmer on by sliding the On/Off switch upwards so that the "I" marking is visible.
2. Place the trimmer at a slight right angle to the skin and trim in the direction of hair growth. It is suggested to trim the hair in the direction of hair growth, as trimming against the direction of growth could cause a rash or irritation.
3. Pull the skin firmly with one hand during the trimming process to ensure the closest trim possible.
4. Move the trimmer slowly and carefully, so as not to cut any hair you do not intend to trim.
5. Trim, shape and define your facial hair as needed.

NOTE: Be careful not to apply excess pressure to the blade, as this may damage the blade and can result in injury to the skin during trimming.

TRIMMER CLEANING & MAINTENANCE

Because the trimmer blades are precision made for a very special use, they should always be handled with care. To ensure long-lasting performance of your trimmer, it is important to clean the blades after every use.

The blades are washable for easy cleaning.

To remove the trimming blade, follow the instructions at REMOVING THE TRIMMING BLADE.

1. First, take a small brush and brush away any loose hairs that have collected in the blades.
2. Rinse the trimming blade under running water.
3. For proper functioning of the trimmer, the handle cannot touch or be immersed in water.
4. After cleaning, make sure to shake off excess water and dry the heads of the trimming blades before replacing onto the handle.

To clean the handle of your precision trimmer, simply wipe with a cloth that has been dampened in water and mild detergent.

LIMITED TWO YEAR WARRANTY

Our goods come with guarantees that cannot be excluded under the Australian Consumer Law. You are entitled to a replacement or refund for a major failure and for compensation for any other reasonably foreseeable loss or damage. You are also entitled to have the goods repaired or replaced if the goods fail to be of acceptable quality and the failure does not amount to a major failure. In New Zealand our goods come with a guarantee that cannot be excluded under the Consumer Guarantee Act 1993.

Conair Australia Pty Ltd. will repair or replace (at our option) your appliance free of charge for twenty-four months from the date of purchase if the appliance is defective in workmanship or materials.

This warranty is an additional benefit and does not affect your legal rights. To obtain service under this warranty, please read the Warranty Leaflet included or contact Conair Customer Service at aus_info@conair.com.

**TO MAKE A WARRANTY CLAIM YOU MUST
RETAIN YOUR PROOF OF PURCHASE.**



Vidal Sassoon and related logos are trademarks of
The Procter & Gamble Company used under license by Conair.

©2017 Conair Australia Pty. Ltd.
Suite 101, 18 Rodborough Rd
Frenchs Forest NSW 2086
Australia

Conair New Zealand Limited
PO BOX 251159
Pakuranga, Auckland 1706
New Zealand

CONTACT US

For advice & tips on your new VS product email us on:
aus_info@conair.com

CUSTOMER SERVICE

Australia: 1800 650 263
New Zealand: 0800 266 247

Visit VSFORMEN.COM.AU for grooming tips & inspiration.

VS
SASSOON

FOR MEN

**YOU WERE
BORN TO
BE REAL,
NOT TO BE
PERFECT**