

IMPORTANT SAFETY INSTRUCTIONS

When using electrical appliances, especially when children are present, basic safety instructions should always be followed, including the following:

Polythene bags over product or package may be dangerous. To avoid danger of suffocation, keep this wrapper away from babies and children. This bag is not a toy.

DANGER: When the unit is used in a bathroom, unplug it after use since the proximity of water presents a hazard even when the unit is switched off.

WARNING: Do not use this appliance in or near bathtubs, showers, basins or other vessels containing water.



• Do not immerse in water or other liquids.

• **Do not reach for an appliance that has fallen into water. Unplug immediately.**

• Unit is hot when in use. Take care to avoid contact between the hot surfaces of the unit and the skin, paying particular attention to the face, neck and hands.

• This appliance is not intended for use by infirm persons (including children) with reduced physical, sensory or mental capabilities, or lack of experience and knowledge, unless they have been given supervision or instruction concerning use of the appliance by a person responsible for their safety.

• Children should be supervised to ensure that they do not play with the appliance.

IMPORTANT: Always unplug the appliance when not in use or before cleaning. Do not leave unattended when plugged in or switched on. Do not place on any heat-sensitive surface and always allow to cool before storing away.

• Do not use any attachments other than those supplied by Conair Australia Pty Ltd.

• Use this appliance only for its intended use as described within this instruction booklet.

• This appliance is not intended for commercial use.

• Never drop or insert any object into an opening.

• Never block the air openings of the appliance or place on a soft surface such as a bed or couch, where the air openings may be blocked. Keep the air openings free of lint and other debris.

• Attachments may get hot during use. Allow them to cool before handling.

• Do not use outdoors or operate where aerosol (spray) products are being used or where oxygen is being administered.

• Keep the cord away from heated surfaces.

• Do not use an extension cord with this appliance.

• If the supply cord is damaged, it must be replaced by the manufacturer, its service agent or similarly qualified persons in order to avoid a hazard.

• After use do not wrap the cord around the appliance as in time this may cause the cord to fracture. Coil cord loosely by the side of the appliance in storage.

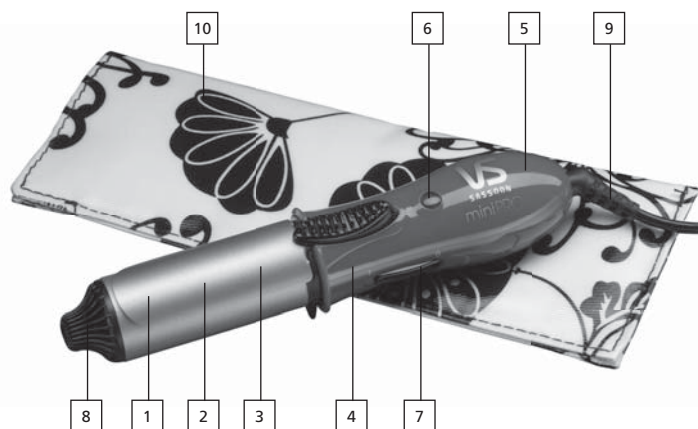
• Always ensure that the voltage to be used corresponds to the voltage marked on the unit.

• For additional protection, the installation of a residual current device (RCD) with a rated operating current not exceeding 30mA is advisable in the electrical current circuit supplying the bathroom.

Ask your installer for advice.

MiniPRO 25mm Ceramic Curling Tong

VS Sassoon's miniPRO Ceramic Curling Tong with its high heat and mini size makes it perfect for on-the-move styling. It has ceramic coating for a shiny, smooth finish and is multi voltage for easy travelling. It also includes a handy storage pouch.



Features:

1. Ceramic coated barrel
2. High heat
3. Fast heat up
4. Automatic temperature control
5. Multi voltage for worldwide use
6. LED on indicator light
7. On/off switch
8. Cool tip
9. Power cord
10. Storage pouch

How to use your miniPRO 25mm Ceramic Curling Tong

PLEASE REMOVE ANY PROMOTIONAL MATERIAL BEFORE USE

- Wash and condition your hair as usual. Ensure that hair is dry, combed through and tangle-free.
- A plastic cover has been placed over the plug to protect it from damage. Remove the plastic cover before inserting into power outlet.
- Plug the appliance into a suitable power outlet and slide the on/off switch to 'I'. At this time the red LED indicator light will turn on.
- To turn appliance off, slide the on/off switch to 'O' and the red LED indicator light will turn off. Unplug the appliance from the power outlet and allow to cool before storing.

What is Ceramic Technology™?

Ceramic Technology™ helps to tame and reduce frizzes and flyways by preventing heat damage and spreading heat evenly and consistently. Hair damage is minimised as heat is distributed evenly from the styling appliance avoiding harmful hot spots.

Multi Voltage

This curling tong has a multi voltage feature for worldwide use. The voltage automatically converts for ease of use from 100-240V~.

NOTE: This curling tong has an internal automatic converter which will automatically convert the voltage without the need of a switch. A suitable plug adaptor will be required, please refer to the chart below.

Plug adaptor required	Voltage and plug adaptors	Country
	British plug: 230V	Ireland, Great Britain, Singapore, South America, Hong Kong (parts only), Africa (parts only)
	European plug: 230V	Asia, Europe, Middle East Noumea, Scandinavia, South America, Hong Kong (parts only)
	Australian and New Zealand plug: 240V	Australia, New Zealand
	American plugs: 120V	North America, Japan, Canada (parts of)

User Maintenance

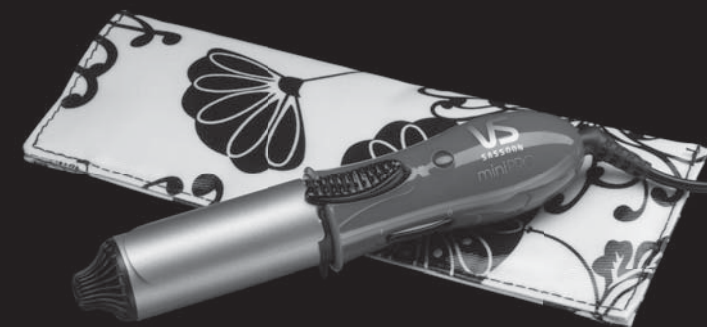
Your curling tong is designed for household use and is virtually maintenance free. No lubrication is needed. This product represents the highest standards of workmanship and engineering research. If cleaning becomes necessary, disconnect the appliance from the power outlet. Allow the straightener to cool and wipe exterior with a cloth. If any abnormal condition occurs, unplug the straightener, allow to cool and return to your place of purchase.

Limited Two Year Warranty

Conair Australia Pty Ltd. will repair or replace (at our option) your appliance free of charge for twenty-four months from the date of purchase if the appliance is defective in workmanship or materials. This warranty is an additional benefit and does not affect your legal rights. To obtain service under this warranty, please fill in and return the Warranty Registration as instructed.

VS
SASSOON

VS
SASSOON



Get more from your styling tools, visit
www.vssassoon.com.au
for news, styling tips and much more.

Vidal Sassoon and related logos are trademarks of
The Procter & Gamble Company used under licence by Conair
©2009 Conair Australia Pty Ltd
Suites 20 and 21,
7 Narabang Way, Belrose NSW 2085
Customer Service Hotline (Australia): 1800 650 263
Customer Service e-mail: aus_info@conair.com
Conair New Zealand Ltd.,
PO Box 251159, Pakuranga, Auckland, 1706, New Zealand
Customer Service Hotline (New Zealand): 0800 266 247

instruction booklet
miniPRO 25mm Ceramic Curling Tong

VSCD63A

LONDON • NEW YORK • SYDNEY
JOIN THE EVOLUTION.™