


## IMPORTANT SAFETY INSTRUCTIONS

When using electrical appliances, especially when children are present, basic safety instructions should always be followed, including the following:

Polythene bags over product or package may be dangerous. To avoid danger of suffocation, keep this wrapper away from babies and children. This bag is not a toy.

**DANGER:** Unplug unit when not in use. All appliances are electrically live even when switched off.

**WARNING:** This appliance must not be taken into a bathroom. 

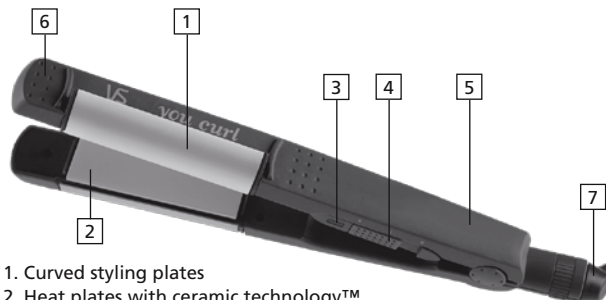
- Do not place appliance on any surface while it is operating, when the unit is used in a bathroom, unplug it after use since the proximity of water presents a hazard even when the unit is switched off.
- Do not immerse in water or other liquids. Do not use in the bath, or near basins or other vessels containing water.
- Do not reach for an appliance that has fallen into water. Unplug immediately.
- Take care to avoid contact between the hot surfaces of the unit and the skin, paying particular attention to the face, neck and hands.
- This appliance is not intended for use by infirm persons (including children) with reduced physical, sensory or mental capabilities, or lack of experience and knowledge, unless they have been given supervision or instruction concerning use of the appliance by a person responsible for their safety. Children should be supervised to ensure that they do not play with the appliance.

**IMPORTANT:** Always unplug the appliance when not in use or before cleaning. Do not leave unattended when plugged in or switched on. Do not place on any heat-sensitive surface and always allow to cool before storing away.

- Do not use any attachments other than those supplied by Conair Australia Pty Ltd.
- Use this appliance only for its intended use as described within this instruction booklet.
- This appliance is not intended for commercial use.
- Never block the air openings of the appliance or place on a soft surface such as a bed or couch, where the air openings may be blocked. Keep the air openings free of lint and other debris.
- Do not use outdoors or operate where aerosol (spray) products are being used or where oxygen is being administered.
- Keep the cord away from heated surfaces.
- Do not use an extension cord with this appliance.
- Do not use this appliance if the supply cord is damaged. In the event of damage, discontinue use immediately and contact your dealer for instructions on returning it for examination or exchange.
- After use do not wrap the cord around the appliance as in time this may cause the cord to fracture. Coil cord loosely by the side of the appliance in storage.
- Always ensure that the voltage to be used corresponds to the voltage marked on the unit.
- For additional protection, the installation of a residual current device (RCD) with a rated operating current not exceeding 30mA is advisable in the electrical current circuit supplying the bathroom. Ask your installer for advice.

## You Curl

VS Sassoon's You Curl uses revolutionary technology and with salon high heat up to 230°C it's a 2-in-1 styler for fast, defined curls or create sleek, smooth styles, all in a single stroke. Curls or straight; choose your style with You Curl.



1. Curved styling plates
2. Heat plates with ceramic technology™
3. Led on indicator light
4. 2 temperature settings: 150C and 230C
5. Dual Voltage for worldwide use
6. Easy hold cool tips
7. Professional length swivel cord

## How to use your You Curl

### PLEASE REMOVE ANY PROMOTIONAL MATERIAL BEFORE USE

- Wash and condition your hair as usual. Ensure that hair is dry, combed through and tangle-free.
- A plastic cover has been placed over the plug to protect it from damage. Remove the plastic cover before inserting into power outlet.
- Plug the appliance into a suitable power outlet. At this time the red LED indicator light will turn on.
- Select the desired temperature by sliding the switch, please see 'How to use the variable temperature settings' for more information.
- The red indicator light will be on.

**WARNING:** This is a high heat appliance. Care must be taken to avoid the hot surfaces of the appliance coming into direct contact with the skin, in particular the eyes, ears, face and neck.

**IMPORTANT:** Hair that has been heavily bleached or chemically treated should only use the low heat settings on this product. Please consult your hairdresser on using heated appliances if you have any concerns about the condition of your hair.

**WARNING:** This appliance is suitable for average use on the 150°C setting. The 230°C maximum high heat setting is not suitable for hair that has been chemically treated, beached or damaged.

**DO NOT USE THIS PRODUCT ON HEAT DAMAGED OR CHEMICALLY DAMAGED HAIR ON THE HIGHER HEAT SETTINGS.**

Temperature Setting Guide	
Variable Temperature Control Settings	Hair Type
Low setting - 150°C	Delicate, fine, bleached, normal hair
Maximum setting - 230°C	Hard to straighten, very thick curly hair

- If you have delicate, fine or coloured hair, use the lower heat setting. For thicker hair, use the higher heat setting.
- You can use your You Curl to straighten or curl your hair. For instructions on how to create curls please read 'Creating Curls'.

- You can also refer to the 'how to' video on the VS Sassoon website for more styling tips at [www.vssassoon.com.au](http://www.vssassoon.com.au)

## IMPORTANT USAGE INSTRUCTIONS FOR THE VS Sassoon You Curl:

**Please read the instructions fully before using for the first time.**

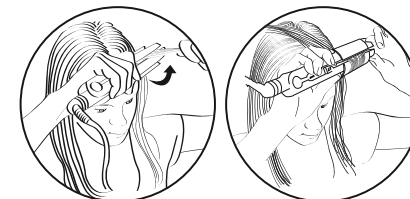
Please note your you curl has been designed to create the optimum curl using a combination of heated and non-heated styling plates. The curved (winged) styling plates on the side of the you curl do not directly heat up. This is the correct operation. They are designed as cooling plates to help set the curls. They can become warm during your styling session. The flat styling plates are designed to heat up. As with all heated styling appliances ensure you are careful when handling near your hair, scalp or facial area. Some experience is necessary when learning to use this styling tool. After using it several times, you will learn the ideal way to use it that best suits you.

## Creating Curls:

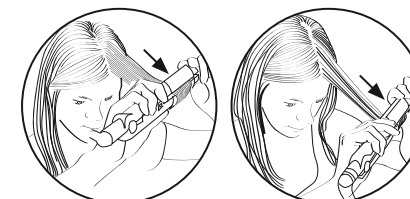
- To create modern curls using the You Curl, follow the directions below. Curls may take some practice so perform the directions on a few sections of hair until you find the most comfortable way for you to create the curls.
- Separate a section of hair. The smaller the section the more defined the curl. The larger the section the looser the curl or wave. For best results the section should be no more than 3.5cms wide.
- Take a section of hair and slide the You Curl into the hair at the roots, ensuring that the side curved styling plates are facing towards the head, and close the plates together.



- Turn the You Curl through 180° downwards so that the side curved styling plates are facing outwards.
- For extra control use the easy grip cool tips at the end of the appliance.

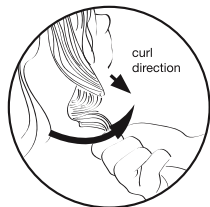


- Slowly glide the You Curl along the length of the hair from root to tip in an outward motion.



- Release the You Curl from the hair.

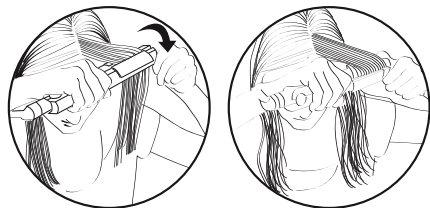
- To ensure the curl sits neatly into place, take the end of the section you have just curled and turn through 180° in the direction of the curl.



- Repeat as necessary.
- A styling aid such as hairspray can be used after styling to set your curls in place.
- After use, unplug the appliance.
- Allow appliance to cool before storing away.
- The You Curl has been designed so it can be used in two alternative ways depending on preference and ease of use. To use the You Curl in the alternative way, please see the step by step instructions below:
- Take a section of hair and slide the You Curl into the hair at the roots, ensuring that the side curved styling plates are facing towards the head, and close the plates together.



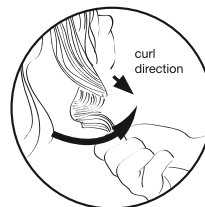
- Turn the You Curl through 180° upwards so that the side curved curling plates are facing outwards.



- For extra control use the easy grip cool tips at the end of the appliance.



- Slowly glide the You Curl along the length of the hair from root to tip in an outward motion.
- Release the You Curl from the hair and to ensure the curl sits neatly in place, take the end of the section you have just curled and using your fingers turn through 180°.
- Repeat as necessary.



- A styling aid such as hairspray can be used after styling to set your curls in place.
- After use, press the off button marked "O" to switch off and unplug the appliance.
- Allow appliance to cool before storing away.

#### What is Ceramic Technology™?

Ceramic coated plates provides even heat distribution for a silky, smooth finish.

#### Dual Voltage

The You Curl has a dual voltage feature for worldwide use. The voltage automatically converts for ease of use from 100-240V~.

**NOTE:** This styler has an internal automatic converter which will automatically convert the voltage without the need of a switch. A suitable plug adaptor will be required, please refer to the chart below.

Plug adaptor required	Voltage and plug adaptors	Country
	British plug: 230V	Ireland, Great Britain, Singapore, South America, Hong Kong (parts only), Africa (parts only)
	European plug: 230V	Asia, Europe, Middle East, Noumea, Scandinavia, South America, Hong Kong (parts only)
	Australian and New Zealand plug: 240V	Australia, New Zealand
	American plugs: 110-120V	North America, Japan, Canada (parts of)

#### User Maintenance

Your appliance is designed for household use and is virtually maintenance free. No lubrication is needed. This product represents the highest standards of workmanship and engineering research. If cleaning becomes necessary, disconnect the appliance from the power outlet. Allow the appliance to cool and wipe exterior with a cloth. If any abnormal condition occurs, unplug the appliance, allow to cool and return to your place of purchase.

#### Limited Two Year Warranty

Conair Australia Pty Ltd. will repair or replace (at our option) your appliance free of charge for twenty-four months from the date of purchase if the appliance is defective in workmanship or materials. This warranty is an additional benefit and does not affect your legal rights. To obtain service under this warranty, please fill in and return the Warranty Registration as instructed.

Vidal Sassoon and related logos are trademarks of The Procter & Gamble Company used under licence by Conair ©2011 Conair Australia Pty Ltd Suites 20 and 21, 7 Narabang Way, Belrose NSW 2085 Customer Service Hotline (Australia): 1800 650 263 Customer Service e-mail: aus\_info@conair.com Conair New Zealand Ltd., PO Box 251159, Pakuranga, Auckland, 1706, New Zealand Customer Service Hotline (New Zealand): 0800 266 247

IB-8/267A

VS2070A

**VS**  
SASSOON



instruction booklet  
you curl

VS2070A

LONDON • NEW YORK • SYDNEY  
**JOIN THE EVOLUTION.™**