

**VS**  
SASSOON

---

---

FORMEN



**METRO POWER DELUXE**

Model VS7436A

## IMPORTANT SAFETY INSTRUCTIONS

When using electrical appliances, especially when children are present, basic safety instructions should always be followed, including the following:

Polythene bags over product or package may be dangerous. To avoid danger of suffocation, keep this wrapper away from babies and children. This bag is not a toy.

**DANGER:** When the unit is used in a bathroom, unplug it after use since the proximity of water presents a hazard even when the unit is switched off.



**WARNING:** Do not use this appliance in or near bathtubs, showers, basins or other vessels containing water.

- Do not immerse in water or other liquids. .

- Do not reach for an appliance that has fallen into water. Unplug immediately.
- Take care to avoid contact between the moving blades of the unit and the skin, paying particular attention to the face, neck and hands.
- This appliance is not intended for use by persons (including children) with reduced physical, sensory or mental capabilities, or lack of experience and knowledge, unless they have been given supervision or instruction concerning use of the appliance by a person responsible for their safety.
- Children should be supervised to ensure that they do not play with the appliance

**IMPORTANT:** Always unplug the appliance when not in use or before cleaning. Do not leave unattended when plugged in or switched on. Do not place on any heat sensitive surface and always allow to cool before storing away.

- Do not use any attachments other than those supplied by Conair Australia Pty Ltd.
- Do not use the appliance with damaged or broken attachment combs or with any teeth missing from the blades, as injury may occur.
- Use this appliance only for its intended use as described in this instruction booklet.
- This appliance is not intended for commercial use.
- Do not place appliance on any surface while it is operating.
- Do not use outdoors or operate where aerosol (spray) products are being used or where oxygen is being administered.
- Never drop or insert any object into any opening
- Do not use the appliance if it is damaged. In the event of damage, discontinue use immediately and contact your dealer for instructions on returning it for examination or exchange.
- Always ensure that the voltage to be used corresponds to the voltage marked on the unit.
- For additional protection, the installation of a residual current device(RCD) with a rated operating current not exceeding 30mA is advisable in the electrical circuit supplying the bathroom. Ask your installer for advice.

## METRO POWER DELUXE – 24PC MEN'S GROOMING SYSTEM

The VS Sassoon Metro Power Deluxe is a 24 piece mains operated grooming system with a high performance motor and stainless steel sharp blades that never need oiling. It features 55 precision settings for all hair cutting types and a 5 position adjustable taper control from 0.8mm to 3.6mm for precision trimming. With 10 comb cutting lengths from 3mm to 25mm including left and right ear guides and a range of grooming accessories, the Metro Power Deluxe hair clipper is the most convenient way to keep you looking good.

### Features:

1. Stainless steel sharp blades never need oiling
2. Mains operated high performance motor
3. 5 position adjustable taper control
4. On/Off switch
5. 8 comb guide cutting lengths (3mm – 25mm)
6. Left & right ear guides
7. Cleaning brush
8. Storage pouch
9. Blade guard
10. Barber comb
11. Styling comb
12. Scissors
13. 4 sectioning clips
14. Neck brush
15. Barbers cape



## INSTRUCTIONS FOR USE

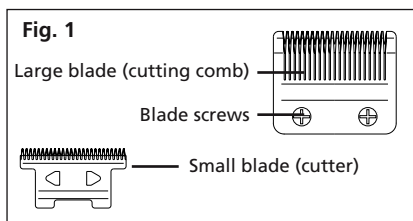
- A plastic cover has been placed over the plug to protect it from damage. Remove the plastic cover before inserting into suitable power outlet. Ensure the appliance is switched off before plugging into a power outlet.
- Plug the appliance into a suitable power outlet and switch the product on by sliding the on/off switch to the 'on' position.
- Always re-apply the blade guard after use, as this helps prevent the blades from damage while not in use.

### Before Use:

Always inspect the appliance to ensure the clipper head is free from hair, etc. and is running smoothly. Check also signs of damage and ensure that the tips of the two blades are parallel and aligned correctly. Correctly aligned blades will provide best cutting performance. Failure to do this can result in injury.

### ALIGNING THE BLADES

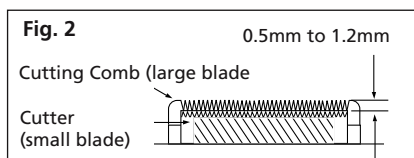
The blades on your clipper may require re-aligning after cleaning or after cutting the hair.



To remove the blades simply unscrew the two screws located on the back of the blade (see Fig.1). The two blades should then

simply be removed from the clipper head. Keep the screws aside for re-applying the blades to the clipper head.

**DO NOT REMOVE THE OILING PAD FROM THE BLADES.**



To realign the blades, simply match them up, point to point. The top edge of the large blade should be 0.5mm to 1.2mm higher than the top edge of the small blade. This is important so that the clipper does not cut too close, or come into contact with the skin.

The extreme left-hand tooth of the large blade must cover or be to the extreme left hand of the first small tooth on the small blade. Be sure that the extreme right-hand tooth of the large blade touches the extreme right-hand tooth of the small blade.

To re-attach the blades to the clipper head, simply slide the small blade on to the white oscillating head, making sure that the small blade and large blade are still properly aligned. Line up the large blade with the two screw holes. Place the original screws, one in each hole and lightly tighten with a Philips head screwdriver until secure.

The clipper is now suitable for use.

## **COMB GUIDE ATTACHMENTS**

The appliance is supplied with 10 comb cutting lengths from 3mm to 25mm including left and right ear guides. The comb guides are marked with the following grade number:

Grade 1 = 3mm  
Grade 2 = 6mm  
Grade 3 = 9.5mm  
Grade 4 = 13mm  
Grade 5 = 16mm  
Grade 6 = 19mm  
Grade 7 = 22mm  
Grade 8 = 25mm  
Left Ear Guide = LEFT  
Right Ear Guide = RIGHT

### **USING THE COMB GUIDES**

1. Ensure the clipper is switched off.
2. Slide the comb guide over the top and sides of the blades and pull down over the back of the blades until it clicks into place.
3. The clipper is now ready to use.

### **TO REMOVE COMB GUIDE**

1. Switch the appliance off.
2. Push the base of the comb guide away from the blades and the comb guide attachment should come away from the blade.
3. The clipper is now ready to use.

### **5 POSITION ADJUSTABLE TAPER CONTROL**

The adjustable taper control lever enables the cutting length to be adjusted between 5 grade lengths, from 0.8mm to 3.6mm settings.

1. To increase the cutting length, push the lever down.
2. To reduce the cutting length, push the lever up.

## **BEST CUTTING PERFORMANCE**

1. Ensure the clipper head is free from hair and other debris.
2. Use on clean, dry hair that has been combed until tangle-free.
3. Place a cape around the neck of the person whose hair is to be trimmed or cut.
4. This person should be seated so that the top of their head is at your eye level.
5. Attach the appropriate comb guide attachment as required. If using more than one grade, start with the longer first.
6. Switch the clipper on.
7. Hold the clipper against the hair, with the teeth of the clipper pointing upwards, yet flat against the head.
8. Move the clipper upwards and outwards through the hair, a little at a time clipping against the direction of the hair growth.
9. The clipper will work most efficiently when cutting through the hair at its own speed. Never force the clipper.
10. Never switch the clipper off whilst in the hair.

## **SUGGESTED HAIR CUTS**

### **FOR LONGER HAIR ON TOP OF THE HEAD**

Use the barber comb to lift the hair on top of the head and use the Clipper to cut across the top of the comb. Alternatively, hold the hair between the fingers and cut to desired length, always working from the front, to the back of the head. Gradually cut the hair shorter by reducing the space between the comb or fingers and the head (Fig. 3). Comb often to check for uneven strands and to get rid of trimmed hair.



**Fig. 3**

## OUTLINING THE HAIR

Outlining requires no attachments. Comb hair into the desired style. Position the Clipper between the sideburns and ear, making sure the corner edge of the blade is against the hairline. With the outline of the hair as your guide, slowly move the Clipper over, around and behind the ears (Fig. 4). For the back of the neck and the sideburns, hold the Clipper upside down, holding it against the skin at the length desired, move the Clipper downwards (Fig. 5).



Fig. 4

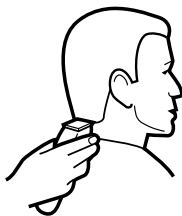


Fig. 5

## CREW CUT

Always cut from the back of the neck to the crown, using the longest comb setting. Hold the comb attachment flat against the head and slowly move the Clipper up through the hair (Fig. 6). Use the same technique for the sides, cutting from the bottom to the upper side of the head. For the front crown, cut the hair against the direction in which it grows. Then even it up with the sides.



Fig. 6

## FLAT TOP

Use the barber comb, not the attachment comb and simply cut the hair on top of the head by running the Clipper over the barber comb (Fig. 7). To taper the hair down to the neckline, use the 3mm attachment comb. Comb the hair to remove any loose cut hair and check for uneven spots. Then outline the sideburns and the neck area (see 'Outlining').



Fig. 7

## CLEANING AND MAINTENANCE

To ensure long lasting performance of your clipper, clean the blades and unit regularly. Always re-apply the blade guard after use, as this helps prevent the blades from damage while not in use.

After each use, clean the clipper as follows:

- 1.Ensure the clipper is switched off and disconnected from mains supply.
- 2.Using the cleaning brush, gently brush and blow away any hairs or debris from the clipper head.
- 3.To clean the clipper unit, wipe with a damp cloth and dry immediately.
- 4.Do not use any liquid cleaners or harsh corrosives on the clipper unit.

At regular intervals (every 3 to 6 months), the blades should be removed and cleaned:

- 1.Ensure the clipper is switched off and disconnected from mains supply.
- 2.Remove the blades from the clipper - refer to 'Aligning the Blades' for instruction on how to remove the clipper blades.
- 3.Using the cleaning brush, gently brush and blow away any hairs or debris from the clipper blades and head. **DO NOT REMOVE THE OILING PAD FROM THE BLADES.**
- 4.Replace the blades on the clipper - refer to 'Aligning the Blades' for instruction on how to attach the blades to the clipper unit.

**IMPORTANT** – Never place the blades under running water, as this can ruin the cutting performance of the blades. Always use the cleaning brush to clean the clipper head and blades.

The blades on this clipper have been factory lubricated and are designed to stay lubricated. They do not need oiling.

**LIMITED TWO YEAR WARRANTY**

Conair Australia Pty Ltd. will repair or replace (at our option) your appliance free of charge for twenty-four months from the date of purchase if the appliance is defective in workmanship or materials. This warranty is an additional benefit and does not affect your legal rights. To obtain service under this warranty, please fill in and return the Warranty Registration as instructed.

Vidal Sassoon and related logos are trademarks of  
The Procter & Gamble Company used under licence by Conair

**CONAIR®**

©2010 Conair Corporation USA, 1 Cummings Point Road,  
Stamford, Connecticut 06902 USA

Conair Australia Pty Ltd, Suites 20 & 21,  
7 Narabang Way, Belrose NSW 2085.  
Australia Customer Service Hotline (Australia): 1800 650 263

Customer Service e-mail: [aus\\_info@conair.com](mailto:aus_info@conair.com)

Conair New Zealand Limited, PO BOX 251159, Pakuranga, Auckland  
2140 New Zealand  
Customer Service Hotline (New Zealand): 0800 266 247